

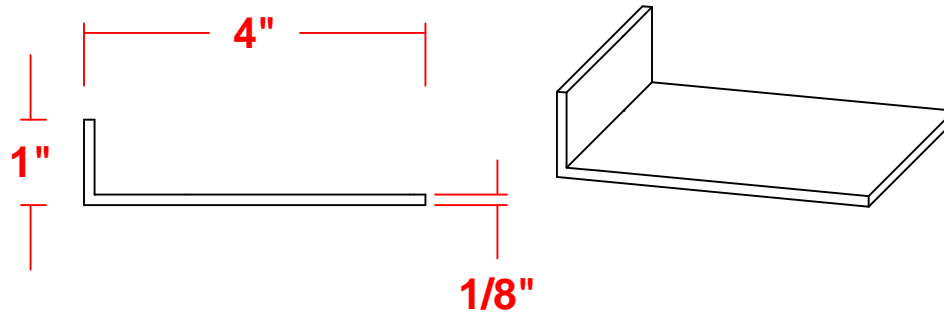
OUTDOOR INSTALLATION

ASSEMBLY INSTRUCTION FOR PROFESSIONAL INSTALLATION ONLY (NOT RECOMMENDED FOR CONSUMER INSTALL)

REQUIRED MATERIALS

Black Anodized Aluminum Extrusion Angles available at:
<http://www.saf.com>

Base Angle = 4 x 1 x 1/8"



1" Exterior
Flathead Wood
Screws (Black) = 24
pcs.

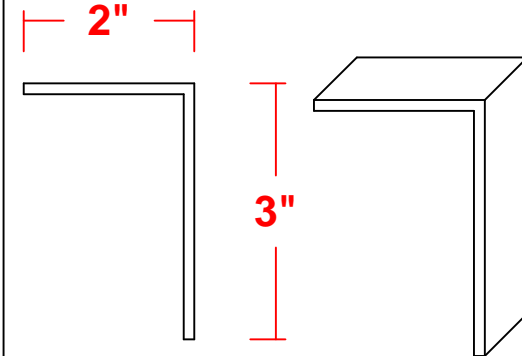
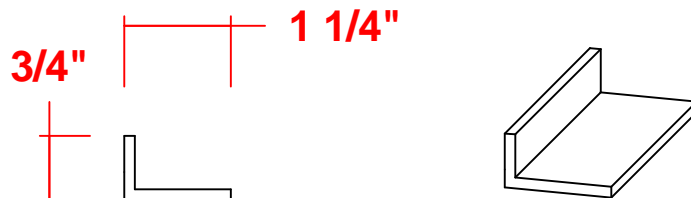


Black Sealant:
GE Silicone II Window & Door
Sealant (can be found at local
hardware stores such as Home
Depot)
OR
Dow Corning 795 Sealant

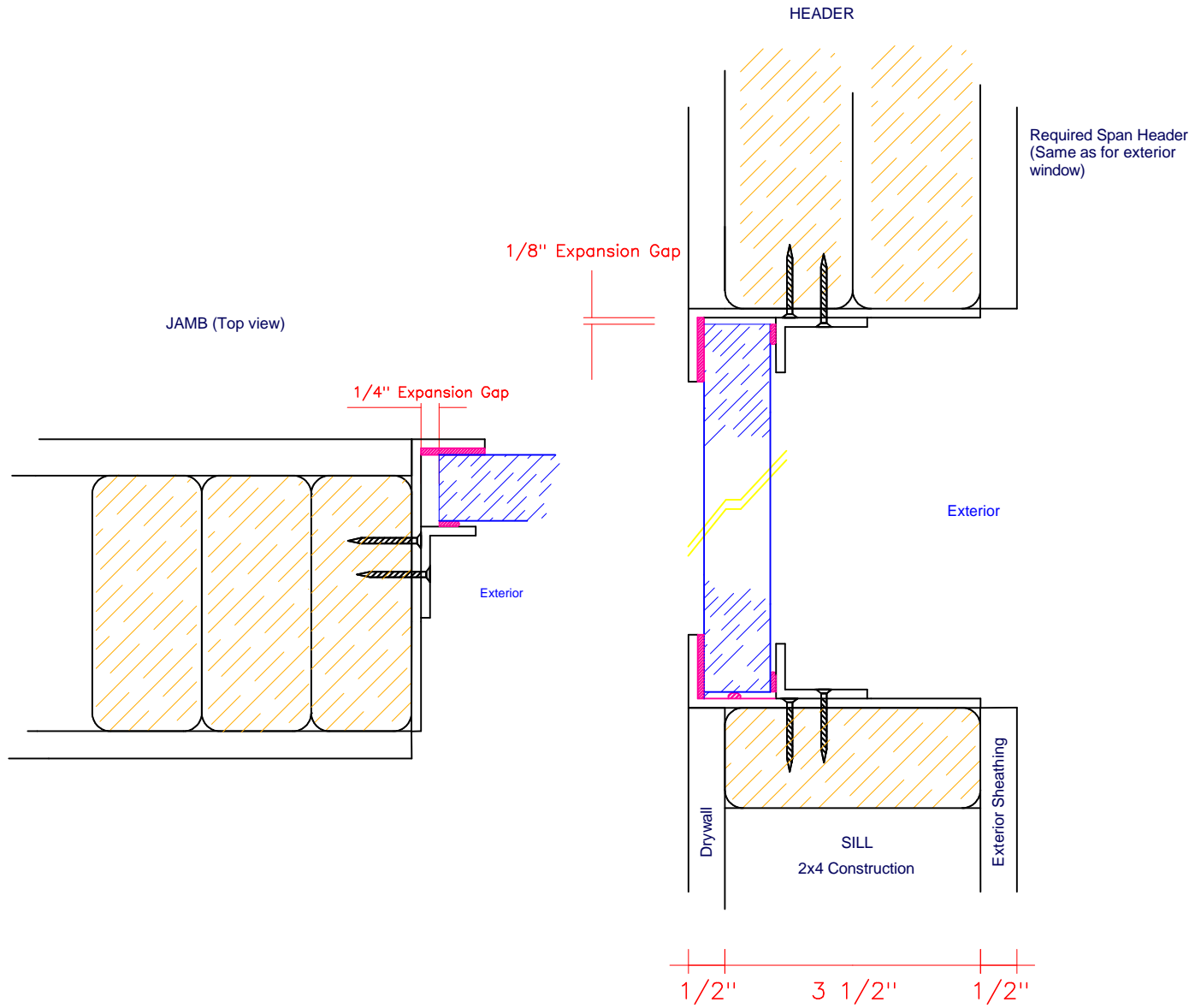
OPTIONAL:

For finished frame
Frame Angle = 2 x 3 x 1/8"

Retainer Angle = 1 1/4 x 3/4 x 1/8"



COMPLETED SECTION PLAN

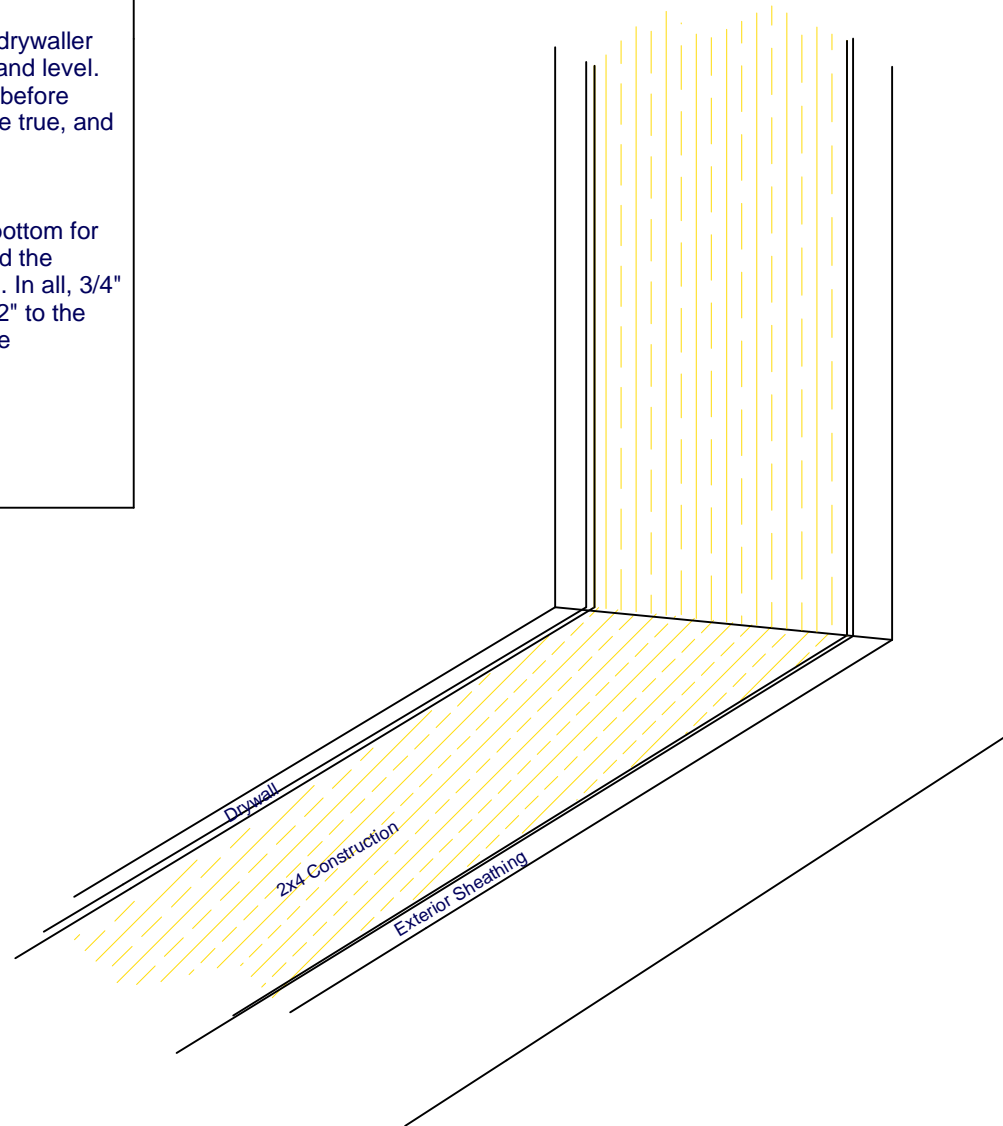
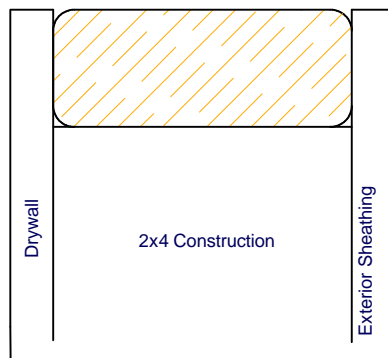


STEP 1 OF 5

Caution: Use only professional technicians when conducting this installation. Keep protective clear plastic on screen throughout entire process.

Follow building codes of your area. Advise builder/drywaller the importance of making opening square, plumb, and level. All mudding/painting finishes should be completed before commencing screen install. Confirm dimensions are true, and sill is level before proceeding.

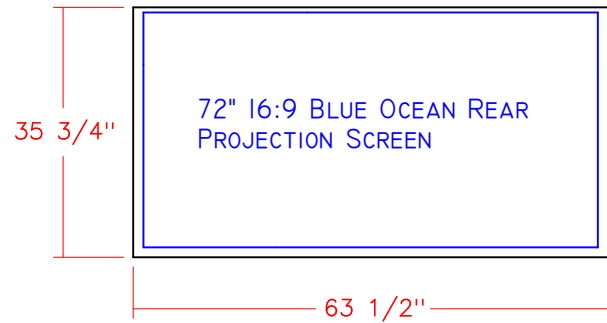
For sizing the rough opening for the screen:
Add a 1/4" to the sides and an 1/8" to the top and bottom for expansion tolerance. Then add another 1/8" around the perimeter for the thickness of the aluminum angles. In all, 3/4" will be added to the screen width dimension and 1/2" to the screen height dimension for the rough opening. (Use dimensions on next page as reference)



ROUGH OPENING REFERENCE DIMENSIONS

Add a 1/4" to the sides and an 1/8" to the top and bottom for expansion tolerance. Then add another 1/8" around the perimeter for the thickness of the aluminum angles. In all, 3/4" will be added to the screen width dimension and 1/2" to the screen height dimension for the rough opening.

Base and Retainer Angle Lengths should only act as references. Angles should be cut to fit actual opening.

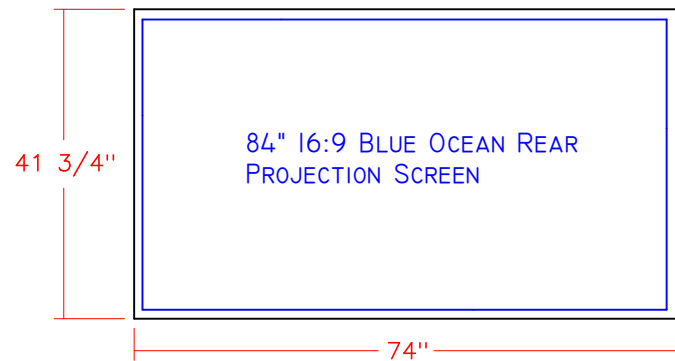


Screen Size: 62.8" x 35.2"

Rough Opening: 63 1/2" x 35 3/4"

Base Angle Lengths: Vertical = 35 3/4" Horizontal = 63 1/2"

Retainer Angle Lengths: Vertical = 35 1/2" Horizontal = 63 1/4"

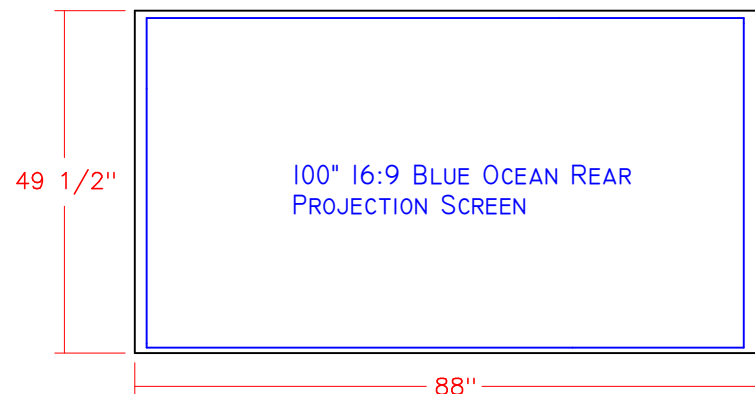


Screen Size: 73.2" x 41.2"

Rough Opening: 74" x 41 3/4"

Base Angle Lengths: Vertical = 41 3/4" Horizontal = 74"

Retainer Angle Length : Vertical = 41 1/2" Horizontal = 73 3/4"



Screen Size: 87.2" x 49"

Rough Opening: 88" x 49 1/2"

Base Angle Lengths: Vertical = 49 1/2" Horizontal = 88"

Retainer Angle Lengths: Vertical = 49 1/4" Horizontal = 87 3/4"

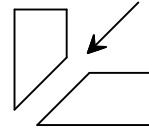
STEP 2 OF 5

After confirming the sill is level, cut the first Base angle so that it will stretch the entire width of the opening (cutting the ends at a 45 degree angle to form a clean corner with the vertical angles).

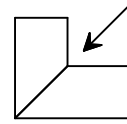
Pre-drill 3 evenly spaced holes in each angle for the screws to go through. Be sure to position holes so they will be covered and hidden by the retainer angle. Then use a countersink so that the screw will be hidden.

Place angle flush with the outside face of the drywall and secure to the sill with screws. Continue cutting and attaching the Base angles to the other 3 sides of the opening in the same manner, confirming they are level/square before securing to 2x4 with screws. (Have this installed before screen arrives so that it can be installed right away)

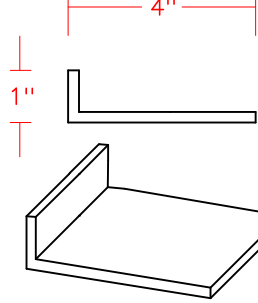
45 Degree Cuts



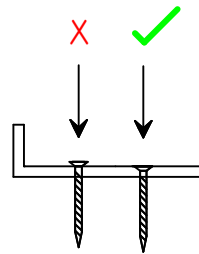
Clean Corner Joint



Base Angle = 4 x 1 x 1/8"



Countersinking Screws

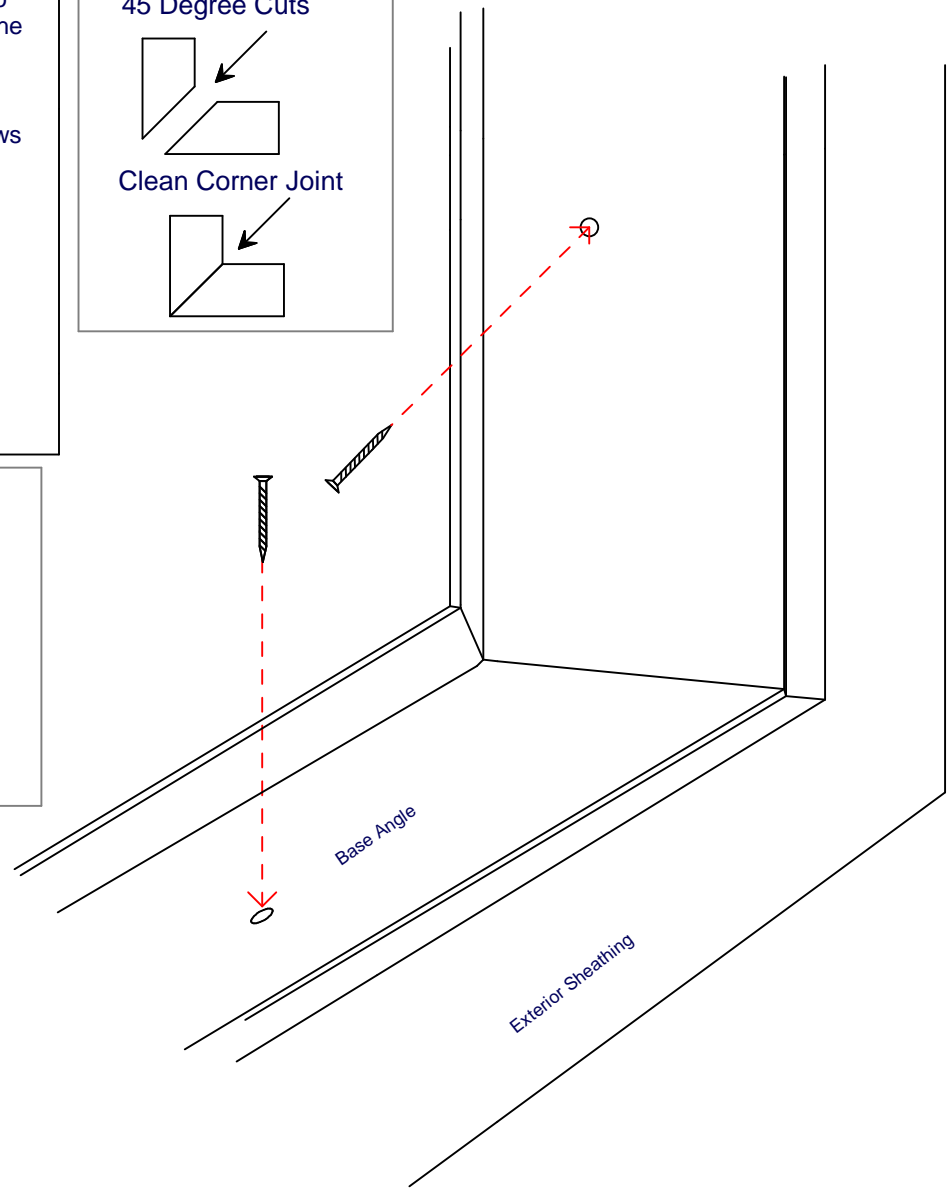


Angle Flush with Drywall

Drywall

2x4 Construction

Exterior Sheathing



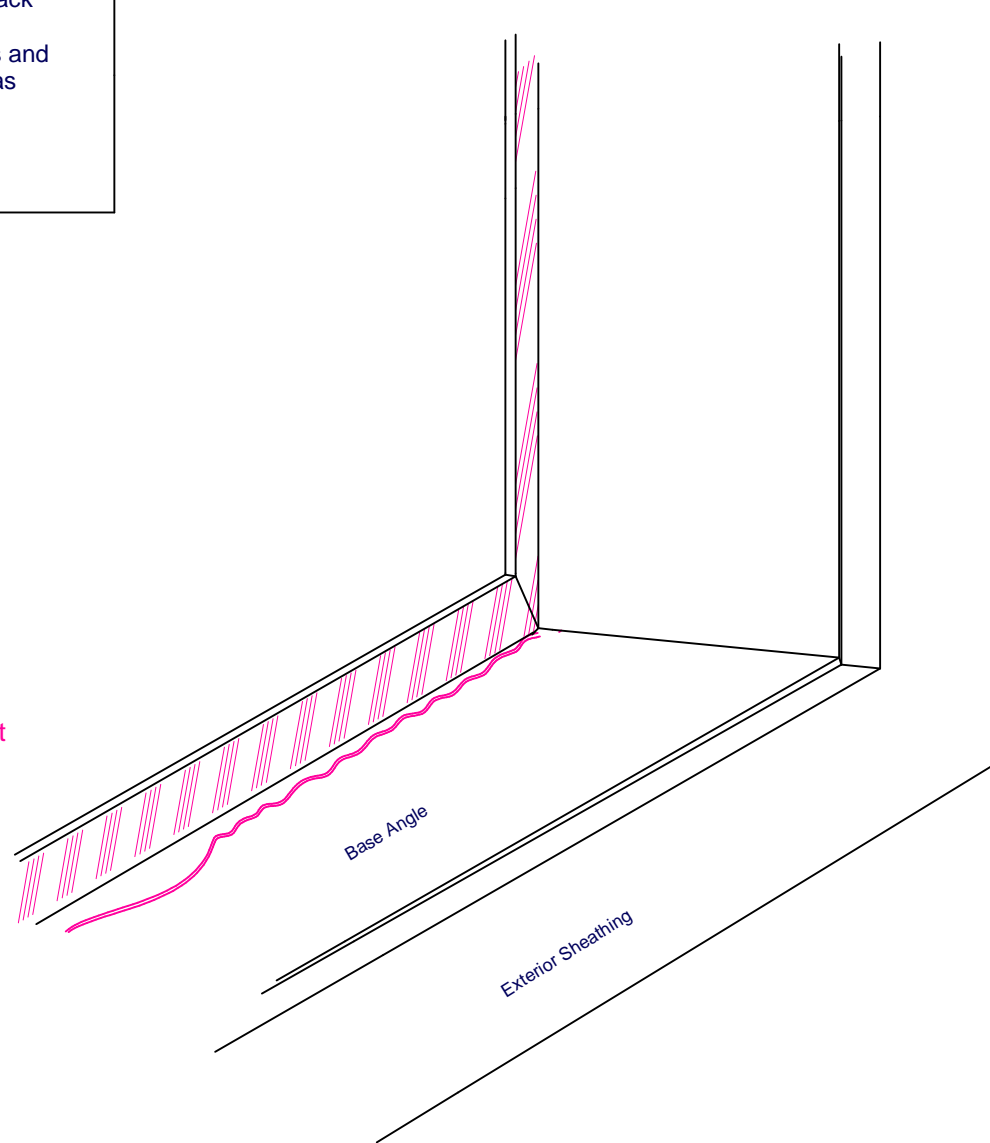
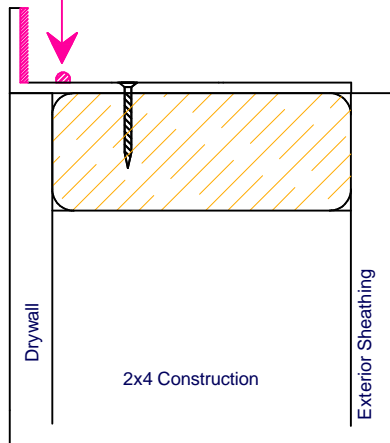
STEP 3 OF 5

Apply a single bead of black sealant to bottom face of base angle where the screen will be. Then apply black sealant to entire inside face of the angle. We recommend using either GE Silicone II for Windows and Doors (can be found at local hardware stores such as Home Depot) or Dow Corning 795 Black Sealant

Black Sealant



Single bead of Black Sealant

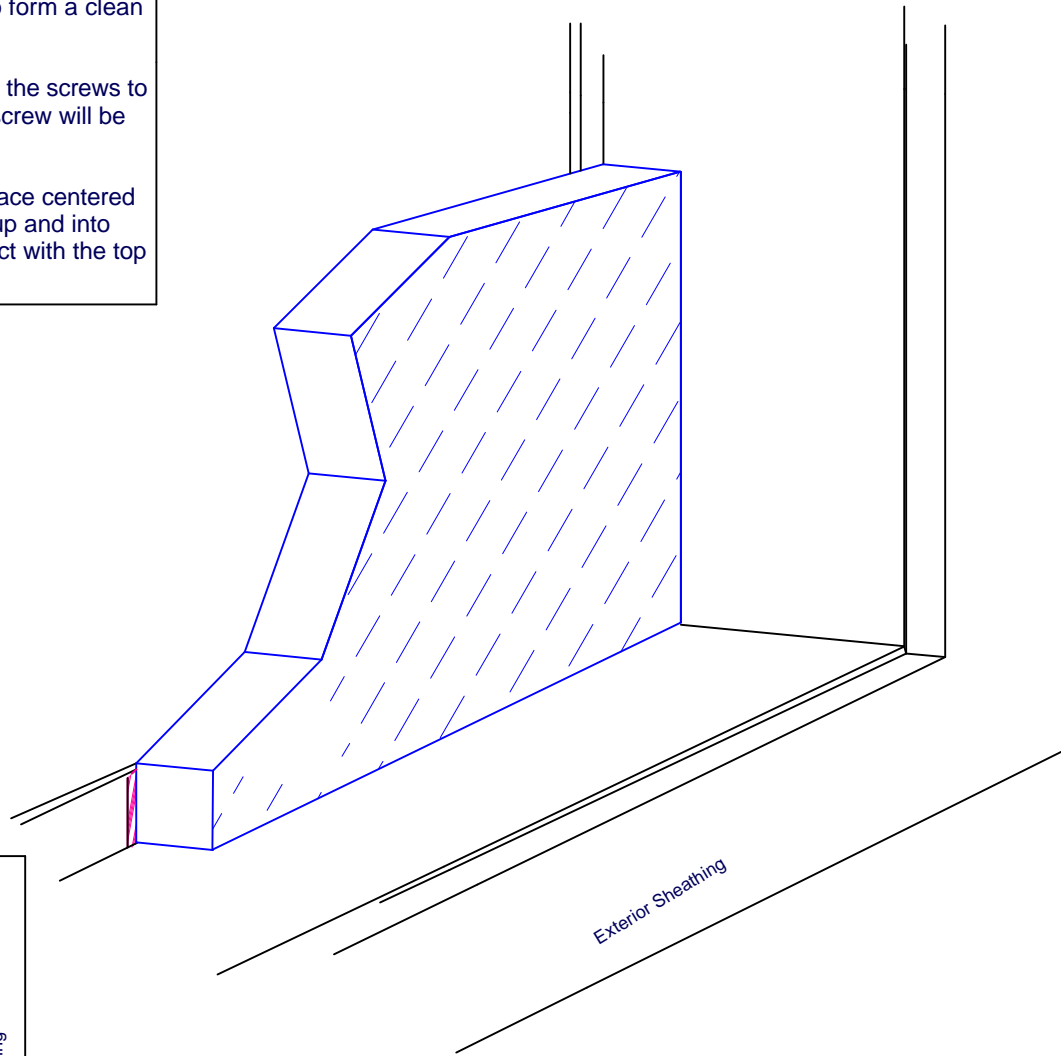
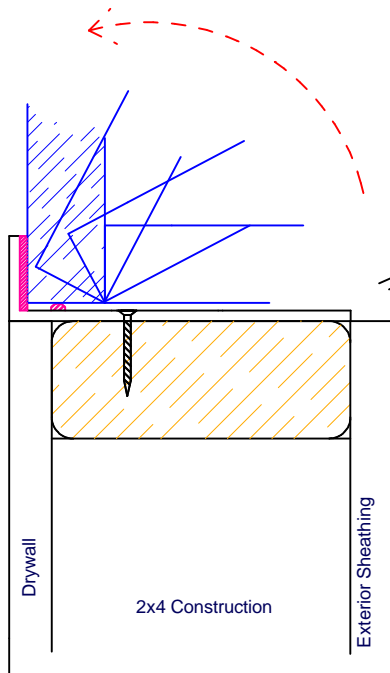


STEP 4 OF 5

Before installing screen, have Retainer Angles cut and ready to install. Cut lengths so that they will fit inside of base angles (cutting the ends at a 45 degree angle to form a clean corner).

Predrill 3 evenly spaced holes in each angle for the screws to go through. Then use a countersink so that the screw will be hidden.

With 2 or more people, lift the screen up and place centered atop bottom Base Angle. Slowly tilt the screen up and into position until the top of the screen makes contact with the top Base Angle. Confirm that it is level/square.



STEP 5 OF 5

Apply sealant to inside of retainer angle, and place against screen, sandwiching it against the base angle. Confirm angles and screen are level/square and secure retainer angle to 2x4 with screws.

Have a bucket of fresh water and several clean cotton clothes ready to wipe away any excess sealant that may have squeezed out. For best results, wipe sealant away immediately before drying. Do not use thinners or solvents around screen, do not allow chemicals or sprays around screens. **THIS WILL CAUSE DAMAGE!**

Consult cleaning and maintenance instructions for suitable cleaning products.

Sealant can also be used as a filler for any gaps left between the angles or the angles and the screen.

After all construction work is complete, remove screen surface protection sheeting and store.

