

Enter To Win A Home Theatre—Details Inside!

The Essential Home Theatre Resource™ Widescreen Review®



SCREENS THE WHERE AND THE HOW

Stewart

half
nelson

Stranger
than
Fiction.

the PURSUIT of
HAPPINESS



\$5.99 US \$7.99 Canada
Volume 16, Number 4, Issue 119
April 2007

www.WidescreenReview.com

Also:

2007 CES Report: Must-See Video Equipment

Panasonic's Hot New Projector

On Screen With Furman Sound

CARADA

The Ultimate Screen Manufacturer Roundup!

Compiled By Danny Richelieu

It is often said that the screen in your projection system is analogous to the loudspeakers in your audio system, and still it is often the least-considered component when designing a new home theatre. There are many aspects that must be considered when choosing a new home projection screen (read Joe Kane's "Qualities Of A High-Performance Home Projection Screen," starting on Page 56), so, in an attempt to educate our readers on the options available, we have created a roundup of the various home projection screen manufacturers out there. In addition, we have included a "buyer's guide," of sorts, listing the screen materials they sell. Enjoy.



Blue Ocean® Rear Projection Screens are manufactured in Japan by Nippura Co., Ltd., better known for their core business of creating the largest acrylic panels, tunnels, cylinders, and spheres for the professional aquarium industry. Since their debut in 2003, Blue Ocean® Rear Projection Screens have amazed viewers across all industries and professions.

Above all, they offer the best in optical transmission, resolution, and color fidelity in a full-bodied image. The screens utilize the proprietary diffusion particle, Blue Ocean, which has no visible matrix, meaning that it has no resolution limitation. Therefore, the screens can be used with today's standard HD 720/1080 resolution, and better yet, they will be perfectly suited for all higher resolution standards of the future, instead of being rendered obsolete. Blue Ocean is also different than earlier generation rear-projection screens because they allow the use of short throw lenses without causing aberration, hotspots, or distortion, which makes them perfect for space-efficient home theatres.

The Blue Ocean diffusion particles are finely cast into the center of the highest optical grade of cell-cast acrylic. The thickness of the



acrylic maintains the screen's rigidity for frameless edge-to-edge projection, shields out ambient light for much better performance in brighter conditions, and creates the deep-bodied effect that differentiates it from other screens. This is the same acrylic that

is used in the largest aquariums around the world, so it acts as a perfect protective barrier. Normal wear-and-tear scratching has no long-term effects on the screen's performance, and a 10-year-old screen, simply re-polished, will literally look and perform exactly as it did the day it left the factory. And since the screen medium is completely internal, the screen is versatile enough to be used in full outdoor applications.

Blue Ocean Rear Projection Screens are available in stock sizes of 72-inch, 84-inch, and 100-inch 16:9 (1.78:1) and can be custom fabricated in any size up to 27-foot x 11-foot, or into domes and curved screens.

For more information, contact U.S. Nippura by phoning 704 370 7720, or by visiting www.usnippura.com.



Carada, Inc. was founded in the spring of 2003, and since then Carada has satisfied thousands of home theatre enthusiasts by offering reasonably priced, high-quality fixed-frame projection screens that are made in the U.S.A. Exceptional attention to detail and craftsmanship goes into every screen Carada builds, and because of their confidence in the quality and performance of their products, they offer a 30-day money-back guarantee on all projection screens (even including custom-sized screens!). Beyond that, Carada screens are under warranty for three years against defects in materials and workmanship.

Carada projection screens are available in two fixed-frame styles—the Criterion Series and the Precision Series, both of which can be matched with any of their seamless screen materials. Both frame styles are constructed from custom-extruded aluminum for strength and beauty, and are covered with a light-absorbing Black Hole™ velvet trim at no extra charge (an extra-cost option on some other brands).

Both frame styles are available in five standard aspect ratios—1.33:1, 1.78:1, 1.85:1, 2.05:1, and 2.35:1; and several standard sizes are available in each aspect ratio. In addition to the standard sizes, Carada can easily build custom sizes and even custom aspect ratios with no extra "custom charges"—pricing simply depends on the size screen being built. All Carada screens are built-to-order by hand in Carada's Alabama production facility and are safely and quickly shipped to customers all over the world. Thanks to their efficient production techniques, most orders are shipped within one to four business days.

Carada has earned a widely acknowledged reputation for exemplary customer service both before AND after the sale, with industry-leading response times. You can read more about Carada screens and order your screen directly from the manufacturer on their fully secured e-commerce website at www.carada.com.



Da-Lite® Screen Company, Inc., one of the most experienced and largest screen manufacturers in the world, is located in a small rural town roughly two-and-a-half hours south east of Chicago, Illinois where the company first began. When hearing the name Da-Lite, many people recognize it as a screen they saw either in a corporate boardroom, classroom, or perhaps their father or grandfather had a Da-Lite screen, which was used for 8mm projection back in the day. Believe it or not, that is the same Da-Lite Screen Company that produces screens for even the most discriminating customers and needs of today's demanding projection systems.

Da-Lite began in the early 1900s, when they invented the first "Silver Screen" for the Nickelodeon theatres. While the company has come quite a long way from its humble beginnings in a small vacant church building in Chicago, the commitment to building quality screens at a reasonable price has always been the company's goal.



One of the things that makes Da-Lite unique is the fact that they are one of only a handful of screen companies that produce their own screen fabrics. Since day one, Da-Lite has been working with the chemistry involved to design and develop projection screen surfaces. Today they have over 17 different fabric options to choose from.

Another thing that makes Da-Lite unique in the industry is the fact that they pride themselves on having the quickest lead times available. While they do stock many of the more common-sized products, if the product you have chosen is not in stock, it can be produced (even if custom) in mere days. Many products are produced in three business days, while others have a very modest five-day production time. Couple that with the enormous support staff that handles the company's toll-free hotline, and you have a winning combination.

So, whether your need for a projection screen is a very simple product or the most advanced high-fidelity video system, Da-Lite has a product to meet your need and your budget.

For more information, contact Da-Lite direct at 800 622 3737 or info@da-lite.com.

DRAPER

Draper screens come in many sizes, styles, and viewing surfaces to fit any home theatre setting.

Draper strives to be at the forefront of projection screen technology and design, with original features such as the "case now-screen later" Access concept, the no-snap permanently-tensioned Onyx, the Plug & Play Salara with quick-connecting wall brackets, and the Ultimate Access with independently motorized trap door that opens into the case. Draper's innovative screen designs have received 13 patents so far (more are pending) and several awards for design excellence.

All of their wall, ceiling, and ceiling-recessed screen models are



available in a variety of standard and custom sizes and formats, including HDTV and CinemaScope®; with a wide variety of viewing surfaces, including matte white, glass beaded, M1300, M2500, High Contrast Grey, Hi Def Grey, acoustically transparent AT1200, acoustically transparent AT Grey, and Cineplex rear-projection surface.

Draper, Inc. is the world's second-largest projection screen manufacturer, and is headquartered in Spiceland, Indiana, a village of 800 people located 40 miles east of Indianapolis. In addition to its Spiceland facilities, Draper has manufacturing or sales operations in Malta, Ohio; Fullerton, California; Blackwood, Gwent, United Kingdom; Nacka, Sweden; Halmstad, Sweden; and Tianjin, China. Draper products are shipped to dealers throughout the United States and in more than 100 foreign countries.

For more information, contact Draper at either 800 238 7999 or www.draperinc.com.



Equipment to keep your A/V
installations cool and quiet....

See us at

www.activethermal.com

or call (661) 294-7999.

YOUR HOME THEATRE



dnp Denmark is the world's leading supplier of optical screen technology. For over a decade, every major development in the field of rear-projection technology has come from the dnp laboratories—including the 200-inch Giant Wide Angle Screen, the world's largest optical rear-projection screen. Expanding into the front-projection market, dnp has revolutionized the industry with the first-ever screen that allows viewing in brightly lit environments. The groundbreaking dnp Supernova™ Screen is the product of many years of research and development, setting new standards in front projection for the ultimate widescreen experience outside of the confines of a traditional dark room.

Supernova offers the best of both worlds: combining superior image quality with ease of installation that is virtually unheard of for a front-projection screen of this caliber. With minimal space requirements, Supernova opens vast new opportunities for display solutions in environments with ambient light such as living rooms, boardrooms, and retail applications. Available in a fixed (Supernova One) or retractable version (Supernova Flex), as well as in a variety of elegant finish options, sizes, and formats, Supernova is compatible with all standard projectors. Supernova is based on a revolutionary high-contrast filter that allows the projected image to be reflected from the screen, effectively absorbing incident light from other angles, such as windows and room lighting. As a result, the screen is virtually unaffected by ambient light.



Among the finest screens on the market, dnp's latest Supernova releases (Supernova Flex and Supernova Infinity) have been certified by the Imaging Science Foundation™ (ISF) for their outstanding image quality. This means the product exceeds the high-quality benchmarks that define the best video performance available for consumers. With a half-gain of 82 degrees, the widest in the industry, this screen provides full 180-degrees viewing. The Supernova Screen combines neutral color reproduction and uniform image quality with extremely high-contrast ratios and superior black levels. Supernova is versatile because it can be used in high ambient light, but also is a perfect fit in a high-end home theatre.

Utilizing the versatility of the new Supernova Screen material, dnp has most recently introduced Supernova Infinity, a modular screen system where multiple Supernova Screen panels seamlessly combine to create a video wall-style front-projection screen. These very large screen size formats are ideal for commercial projection applications.

As a market leader, dnp provides its dealers with the best technical support and with some of the most innovative sales and marketing tools within the screen industry.

For more information, visit dnp Denmark at www.dnp.dk.



Elite Screens, Inc. began as an innovative venture into the projection market by manufacturing veterans from the A/V industry. The California-based company quickly established itself with lines of commercial and entry-level home theatre products that are both reliable and cost effective. They achieved this by focusing on mass-producing the screen material, sizes, and aspect ratios that were most commonly preferred by A/V customers. They avoided custom-made products in favor of uniformity that would match the mainstream demographic, while including extra features normally not included by manufacturers in the past.

They produce a full line of fixed frame, electric, and portable lines of projection screens. Their easy-to-assemble Fixed Frame products, along with the pre-assembled portable and retractable screens that come ready for operation right out of the box with other supplemental features, help make their product highly desirable. As interest in specialized products grew, they responded by introducing the Elite Prime Vision line of specialized premium grade products for the custom installer.



Their Taiwanese Research and Development division-produced designs focus on elegance and reliability at attainable pricing, while the production facilities located in China and Taiwan produce quality-made projection screens that have been referred to favorably by consumers and critics alike.

The Retail and Custom Install products produced by Elite Screens and its subsidiary company, SolaraHome, ensures a complete turnkey solution for providing a home theatre environment. They now provide projection screens, mounts, and home theatre furnishings made by professionals dedicated to their craft, to ensure a quality product for virtually any media environment.

Their commitment to excellence in product and service promises to ensure that Elite Screens will remain a prominent member of the A/V manufacturing community for many years to come.

For more information, phone Elite Screens at 877 511 1211 or visit them at www.elitescreens.com.

Your home theater deserves the very best.



The World's Brightest High Definition Flat Screen

See it all... you earned it.



Visit us at www.vutec.com, or email info@vutec.com to learn more.

Patent No. 7,057,812

YOUR HOME THEATRE



Combining its 23-year heritage in delivering top-quality display products and unparalleled customer service with a dedicated team of specialty home theatre industry veterans, Planar Systems recently announced its expansion into the specialty home theatre market.

One of the first home theatre product offerings from Planar is the new Xscreen, which brings the large format size and cinema-like experience of front-projection home theatre to any room—regardless of light conditions.

Using proprietary Daytime Film Technology™, Planar Xscreen overcomes the major problem that plagues home cinema projectors—ambient light. The Planar Xscreen makes it possible to use front projection outside dedicated home theatres, because it reduces reflected light from windows or lamps that degrade picture quality. The combination of a 4-millimeter layer of hardened glass beneath the screen surface provides an absolutely flat surface for an improved image experience.



Screen Innovations, founded in 2003, brings a fresh new perspective to the projection screen industry. The founders of SI came from the world of A/V retail and possess a uniquely broad understanding of both consumers' and A/V professionals' wants and needs. SI's products are designed to address constantly changing consumer demands for performance, value, and visual appeal, while staying strategically aligned with the trends of today's projectors. SI insures the best availability of its core products by maintaining a finished-goods inventory and by offering quick ship programs, while still exceeding industry standards for production speed on over 50,000 custom product variations.

Screen Innovations is always pushing to exist at the bleeding edge of projection screen technology. A key example of this is the award-winning Visage screen. The Visage's patented microscopic surface filter reflects the light from the direction of the projector, while



The Xscreen (available in 60-, 70-, 80-, and 100-inch options) enables front projection to be used in virtually every type of room, like other flat panel TV technology, but at a lower cost per diagonal inch. Furthermore, Planar Xscreen is surrounded in an elegant, black, piano-gloss frame design to complement any home's décor.

For even more convenience, the Xscreen Plus package offers added functionality by making it the hub for all components, leaving only one cable to run to the projector. A simple, universal remote controls all the components, including cable boxes.

Planar's display heritage, channel relationships, and history of innovation put the company in a unique position to provide home theatre resellers and their customers a wide selection of products for any home theatre display application. The Planar Xscreen is one example of the company's ability to leverage its disciplined specialty display channel approach and history of engineering innovation, to bring demanding performance to specialty home theatre products.

Planar can be reached at 866 752 6271 or www.planar.com.

actually absorbing the light from off-axis ambient sources, enhancing contrast levels by as much as 10x over traditional screen surfaces.

In response to dealer and consumer demand for a better method of selecting projector and screen combinations, Screen Innovations created the Screen Wizard. The Screen Wizard is the simplest way for an A/V professional or end user to maximize picture quality by selecting the best screen surface for their projector, screen size, and light environment. The days of educated guessing or recommending one screen material for almost any situation are rapidly becoming a thing of the past.

Another innovative concept from Screen Innovations is the ScreenAccents series of aesthetic options. End users, interior designers, and custom integrators are no longer limited to only a black frame. Ten optional fabric colors and four hardwood fascias represent a dramatic departure in projection screen appearance and have gained wide support from the design community through unparalleled integration with room decor.

Phone Screen Innovations at 512 832 6939 or visit them at www.screeninnovations.com.

Think of your Carada Criterion as fine art.



Where you hang it is up to you.

Carada brings high end sophistication to your home theater with the Criterion Series fixed frame projection screen. The beautifully handcrafted beveled frame is designed to completely eliminate any gaps between the viewing surface and the frame, and to provide the perfectly flat surface your projector needs to perform at its highest possible level. And the luxurious Black Hole™ trim elegantly frames your movies, HDTV, and games with a crisp, contrast-enhancing border. The Criterion Series frame can be paired with any of Carada's high quality surface materials, including our widely acclaimed Brilliant White, to give your home theater the impact and excitement it deserves.

Your Carada Criterion Series is a masterpiece worthy of an art gallery, without the price tag of a Picasso.



FRONT
(Cross-section)



BACK

"The goal of any screen is to accurately portray the picture you are projecting — and the Criterion does that with flying colors."

"Setup could only be simpler if Carada had a person come to your home and do it for you."

Clint DeBoer, Editor-in-Chief of Audioholics

WHAT IMAGE DO YOU WANT TO PROJECT?

CARADA

www.carada.com • info@carada.com

Screen Type	Gain	Half Gain	Sizes Available	Frame Options	"Acoustically Transparent" Option?	Description	Price
Blue Ocean Rear Projection Screen	0.7, 1.0, 1.3	40" - 60"	72", 84", 100"	Frameless	No	See company description	\$3,410 - \$4,475; \$6,850 Available By Request
Blue Ocean Custom	0.7, 1.0, 1.3	40" - 60"	110" - 273" (1.78:1); 250" - 340" (2.35:1)	Frameless	No	Custom sizes for Blue Ocean screen material	
Carada Precision Series Brilliant White	1.4	45"	60" - 150"	Fixed frame	No	High-color fidelity without hotspotting	\$395 - \$975
Carada Precision Series Classic Cinema White	1	60"	60" - 150"	Fixed frame	No	Unity gain with widest viewing angle	\$375 - \$980
Carada Precision Series High Contrast Grey	0.8	45"	60" - 150"	Fixed frame	No	Enhances black levels for high-lumen output projectors	\$400 - \$985
Carada Criterion Series Brilliant White	1.4	45"	60" - 150"	Fixed frame	No	High-color fidelity without hotspotting	\$465 - \$1140
Carada Criterion Series Classic Cinema White	1	60"	60" - 150"	Fixed frame	No	Unity gain with widest viewing angle	\$445 - \$1045
Carada Criterion Series High Contrast Grey	0.8	60"	60" - 150"	Fixed frame	No	Enhances black levels for high-lumen output projectors	\$470 - \$1145
Da-Lite Da-Mat	1	60"	72", 82", 84", 92", 100", 106", 110", 119", 120", 133", 150"	Tensioned Contour, Tensioned Cosmopolitan, Tensioned Advantage Deluxe, Tensioned Advantage, Tensioned Horizon, Tensioned dual mask, Designer Da-Tab, Cinema Contour, Da-Snap, Imager, Perm-Wall1	Yes—Audio Vision	Smooth, white vinyl finish with wide viewing angle and no resolution loss	By size and frame choice
Da-Lite Cinema Vision	1.3	45"	Same as Da-Mat	Same as Da-Mat	No	Non-supported vinyl fabric with bright, uniform image with no color shift. For lower light output projectors.	By size and frame choice
Da-Lite Pearlescent	1.5	40"	Same as Da-Mat	Same as Da-Mat	No	Non-supported vinyl fabric, with even higher degree of reflectivity and brilliance. Good for high-ambient light situations.	By size and frame choice
Da-Lite High Contrast Da-Mat	0.8	45"	Same as Da-Mat	Same as Da-Mat	Yes—High Contrast Audio Vision	Special gray surface. Designed for use with high-light output projectors; lowers black levels for better contrast.	By size and frame choice
Da-Lite High Contrast Cinema Vision	1.1	50"	Same as Da-Mat	Same as Da-Mat	Yes—High Contrast Cinema Perf	Designed for moderate output fixed-pixel projectors and moderately controlled ambient light. Provides good black-and-white levels.	By size and frame choice
Da-Lite Matte White	1	60"	Same as Da-Mat	Same as Da-Mat, plus options for non-home theatre specific frames	No	One of the most versatile screen surfaces and a good choice when ambient light is controllable.	By size and frame choice
Da-Lite High Contrast Matte White	1.1	50"	Same as Da-Mat	Same as Da-Mat	No	Designed for moderate output fixed-pixel projectors and moderately controlled ambient light. Provides good black-and-white levels.	By size and frame choice
Da-Lite Video Spectra 1.5	1.5	35"	Same as Da-Mat	Same as Matte White	No	Specially designed with a reflective coating to provide increased brightness for rooms with uncontrollable ambient lighting.	By size and frame choice
Da-Lite High Power	2.8	30"	Same as Da-Mat	Same as Matte White	No	Provides reflectivity and optical characteristics of a glass-beaded surface. For high, uncontrollable ambient light situations.	By size and frame choice
dnp Denmark Supernova One 1.78:1	Not provided	82"	45", 60", 72", 84", 92", 100", 100", 120"	Fixed frame	No	Low-gain material can be used in bright environments. Frame colors include black and silver-grey aluminum.	From \$97.9 to \$4,779 depending on size and frame
dnp Denmark Supernova Flex 1.78:1	Not provided	82"	72", 84", 92", 100", 120"	Retractable	No	Motorized frame with low-gain screen material. Housing colors include black, white, silver-grey aluminum, blonde maple, and cherry wood.	From \$6,610 to \$8,690 depending on size and frame. Cover for motor unit sold separately (\$210 to \$250 depending on color). Prices not yet available.
dnp Denmark Supernova Flex 2.35:1	Not provided	82"	84", 100", 120", 130", 140", 150"	Retractable	No	Same as Supernova Flex 1.78:1, but in a 2.35:1 aspect ratio	
Draper MT300	1	90"	Up to 161"	Onyx, Clarion, Cineperm, Access/Series V, Ultimate Access/Series V, Signature/Series V, Silhouette/Series V	No		By size and frame choice
Draper M2500	2.1	27"	Up to 161"	Same as MT300	No	Higher gain tolerates more ambient light	By size and frame choice
Draper H161 Grey	0.9	90"	Up to 161"	Same as MT300	No	Lower gain for better black reproduction and enhanced color contrast	By size and frame choice
Draper Cineflex	2.3	15"	Up to 161"	Onyx, Clarion, Cineperm	No	Rear projection surface	By size and frame choice
Draper AT1200	1	90"	Up to 161"	Onyx, Clarion, Cineperm, Access/Series E, Ultimate Access/Series E, Signature/Series E, Silhouette/Series E, Salara, Salara Plug-And-Play	Yes	Acoustically transparent	By size and frame choice
Draper AT Grey	0.8	90"	Up to 161"	Same as AT1200	Yes	Acoustically transparent gray surface for better black reproduction and enhanced color contrast	By size and frame choice
Draper Matte White	1	27"	Up to 184"	Access/Series E, Ultimate Access/Series E, Signature/Series E, Silhouette/Series E, Salara, Salara Plug-And-Play	No		By size and frame choice
Draper Glass Beaded	2.7	90"	Up to 184"	Same as Matte White	No	Brighter than matte white with wide viewing cone	By size and frame choice
Draper High Contrast Grey	0.8	90"	Up to 184"	Same as Matte White	No	Lower gain for better black reproduction and enhanced color contrast	By size and frame choice
Elite Screens Cinema Vision Gray	1	80"	84" - 150"	Fixed tension frame with 4-side masking	No	Home theatre tension screen	\$629 - \$1,419
Elite Screens Cinema Vision White	1.1	80"	84" - 150"	Fixed tension frame with 4-side masking	No	Home theatre tension screen	\$629 - \$1,419

1 For more information on Da-Lite's frame options, visit www.widescreenreview.com/119/dalite

Elite Screens Cinema Vision High Gain White	1.8	45"	84" - 150"	Fixed tension frame with 4-side masking	No	Higher gain home theatre tension screen	\$629 - \$1,419
Elite Screens Home Series	1.1	80"	82" - 198"	Fixed frame with 4-side masking	No	Premium-grade screen with motorized masking	
Elite Screens Spectrum	1.1	80"	84" - 125"	Fixed frame with 4-side masking	No	Economy line home theatre motorized screen	\$249 - \$389
Elite Screens EZ Frame White	1.1	80"	84" - 200"	Velvet surfaced fixed frame.	No	Premium-grade fixed-frame home theatre screen	\$589 - \$1,499
Elite Screens EZ Frame Gray	1	80"	84" - 200"	Velvet surfaced fixed frame.	No	Premium-grade fixed-frame home theatre screen	\$589 - \$1,499
Elite Screens SilverFrame	1.0, 1.1, 1.8	80", 80", 45"	84" - 120" (1.8:1 gain); 92" - 106" (1.0)	Brushed metal fixed frame	No	Economy line home theatre fixed-frame screen	\$339 - \$499 (1.1 and 1.8 gain); \$368 - \$429 (\$1,399 (60"), \$1,699 (70"), \$1,999 (80"), \$2,799 (100")
Planar Xscreen	2	30"	60", 70", 80", 100"	Wall-mountable fixed frame	No	Intended for home theatre applications. See company description for more.	
Planar Xscreen Plus	2	30"	Same as Xscreen	Same as Xscreen	No	Plus package includes on-board connectivity for multiple video inputs allowing for a single video cable to be sent to the projector Xscreen cost)	\$1,299 (in addition to inputs)
Screen Innovations Visage	2	46"	60" - 120"	Fixed frame (2.75 to 3.5 inches wide)	No	Also available in tiled versions up to 360 inches. ScreenAccents	\$1,799 - \$6,448
Screen Innovations Reference Series	.65 - 1.3	70" - 85"	60" - 215"	Fixed frame (3.5 inches wide)	Yes	ScreenAccents available	\$899 - \$5,987
Screen Innovations Performance Series	.65 - 1.1	70" - 85"	80" - 133"	Fixed frame (2.75 inches wide)	No	Quick shipping available	\$679 - \$1179
Screen Innovations Zen Series	1	85"	80" - 110"	Fixed frame (2.5 inches wide)	No	Quick shipping available	\$399 - \$649
Screen Innovations Motorized Series	1.1	80"	77" - 160"	Motorized retractable	No	12-volt and IR controls included. 24-inch drop included.	\$1,399 - \$2,699
Screen Innovations Drop Down Series	1.1	80"	77" - 106"	Manual retractable	No		\$319 - \$549
Screen Innovations Fixed Sensation Series	1	85"	80" - 133"	Fixed frame (2.75 inches wide)	No		\$649 - \$1,099
Screen Research SolidPix Matte White non-AT	1	180"	70" - 150"; See Web2 for more details.	J-Frame (fixed); I-Frame (fixed frameless); TheaterCurve™ (fixed); Motorized Supreme (retractable; with or without in-ceiling trap door and slot casings; masking available as well); Cnask Classic (fixed with masking); Xmask Supreme (fixed with 4-way and 2-way electronic masking; also available with TheaterCurve)2	No	ISF-certified. Intended for home theatre use. Custom sizes and configurations available.	See Web2
Screen Research ClearPix1 Bright White AT	0.95	180"	50" - 100"; See Web2	J-Frame (fixed); I-Frame (fixed frameless)	Yes—See company description for more.	THX®- and ISF-certified. Custom sizes and configurations available.	See Web2
Screen Research ClearPix2 Pearl Grey AT	0.75	180"	70" - 210"; See Web2	Same as SolidPix Matte White, plus Le Wing Mid and Le Wing High	Yes—See company description for more.	Only recommended for first-generation fixed-pixel projectors with less than 600:1 contrast ratio. THX- and ISF-certified. Custom sizes and configurations available.	See Web2
Screen Research ClearPix2 Matte White AT	0.95	180"	70" - 206"; See Web2	Same as ClearPix2 Pearl Grey AT	Yes—See company description for more	THX- and ISF-certified. Custom sizes and configurations available.	See Web2
Stewart Filmscreen StarGlar 60 (Rear Projection Glass)	0.6	47"	up to 233"	Fixed (masking available)	No	Largest black screen on market. Good for environments with ambient light. Weatherproof.	Depends on size
Stewart Filmscreen StarGlas 100 (Rear)	1	53"	up to 275"	Fixed (masking available)	No	Designed for use in edge-blending applications. Weatherproof.	Depends on size
Stewart Filmscreen FireHawk G3 1080p	1.25	30"	Call factory	Fixed (retractable and multi-masking available)	Yes	Good for rooms with ambient light. Increases black levels, shadow detailing. For single lens projectors.	Depends on size
Stewart Filmscreen FireHawk SST (Sony/Stewart Theater)	1.1	33"	Call factory	Fixed (retractable and multi-masking available)	Yes	Specialty engineered for use with Sony VPL-VW50 projector. Good performance in ambient light. Allows for shorter throw distance.	Depends on size
Stewart Filmscreen GrayHawk RS	0.95	64"	Call factory	Fixed (retractable and multi-masking available)	Yes	Good performance in ambient light. Increases black levels, shadow detailing. Good color fidelity and flat-field uniformity. Engineered for single lens projectors.	Depends on size
Stewart Filmscreen GrayMatte 70	0.7	180"	Up to 81 feet	Fixed (retractable and multi-masking available)	Yes	Neutral density gray material	Depends on size
Stewart Filmscreen SnoMatte 100	1	180"	Call factory	Fixed (retractable and multi-masking available)	Yes	Matte white screen. Unity gain reference. Extremely wide angle of view.	Depends on size
Stewart Filmscreen StudioIek 130	1.3	75"	Call factory	Fixed (retractable and multi-masking available)	Yes	Industry's standard reference screen. JRP- & ISF-certified. Over 30 percent brighter than matte white. Wide viewing angle.	Depends on size
Stewart Filmscreen UltraMatte 150	1.5	35"	Up to 81 feet	Fixed (retractable and multi-masking available)	Yes	Multi-purpose screen. Over 50 percent brighter than matte white.	Depends on size
Stewart Filmscreen UltraMatte 130	1.3	75"	Up to 81 feet	Fixed (retractable and multi-masking available)	Yes	Over 30 percent brighter than matte white.	Depends on size
Stewart Filmscreen UltraMatte 200	2	26"	Up to 81 feet	Fixed (retractable and multi-masking available)	Yes	Color corrected for CRT projectors. Over 100 percent brighter than matte white.	Depends on size
Stewart Filmscreen CineCurve 2.40:1	-	-	Custom	Fixed (multimasking available)	Yes. Also available with acoustically transparent masking panels	CineCurve is available in most materials listed above.	Depends on size
Vutech SilverStar XWF	6	90"	Up to 146" (129" for 2.35:1)	Fixed (black velvet)	No	High-performance front-projection screen	\$2,210 - \$3,560 (\$3,330 for 2.35:1)
Vutech Prismaltec	5	80"	80" - 144"	SF Frame	No	High-performance rear-projection screen	\$1,530 - \$5,890

2 For more information on Screen Research's frame options and pricing, visit www.widescreenreview.com/119/sr

Vutec Vision XF1 - SilverStar (2.35:1)	6	190"	115" - 168.5"	Fixed (black velvet)	No	Tri-plex vertical masking system included	\$15,000 - \$23,000
Vutec Vision XWT-BrilleWhite Opaque	1.3	180"	92" - 147" (129" - 189" for 2.35:1)	Fixed (black velvet)	No	Wide beveled wall screen	\$1,640 - \$3,520 (\$3,630 - \$8,170 for 2.35:1)
Vutec Vision XLT Vu-Flex Pro	1.3	180"	92" - 147" (129" - 189" for 2.35:1)	Aluminum Extrusion Black/White	No	Self-supported, motorized wall or ceiling	\$2,010 - \$3,230 (\$2,850 - \$4,300 for 2.35:1)
Vutec Vision XLT PearlBrille	3.1	180"	92" - 147" (129" - 189" for 2.35:1)	Aluminum Extrusion Black/White	No	Tab-tensioned, motorized wall or ceiling	\$3,120 - \$4,400 (\$4,130 - \$5,900 for 2.35:1)
Vutec Vision XTC Vu-Flex Pro	1.3	180"	92" - 147" (129" - 189" for 2.35:1)	Aluminum Extrusion Black/White	No	Self-supported, motorized ceiling, recessed	\$3,470 - \$4,680 (\$4,270 - \$5,950 for 2.35:1)
Vutec Vision XTC PearlBrille	3.1	180"	92" - 147" (129" - 189" for 2.35:1)	Aluminum Extrusion Black/White	No	Tab-tensioned, motorized ceiling, recessed	\$5,370 - \$6,315 (\$6,160 - \$7,500 for 2.35:1)
Vutec Vision XTC SoundScreen	1	180"	92" - 147" (129" - 189" for 2.35:1)	Aluminum Extrusion Black/White	Yes	Self-supported, motorized ceiling, recessed	\$4,260 - \$6,740 (\$6,060 - \$8,200 for 2.35:1)

YOUR HOME THEATRE



Stewart Filmscreen Corporation® has been designing and manufacturing the world's finest projection-precision projection screens for the home and commercial markets for 60 years. A family-owned and operated business, Stewart Filmscreen maintains the highest standards in screen design and craftsmanship. All manufacturing is controlled in-house at Stewart's own facilities. Using the highest-quality materials, Stewart technicians, in the company's manufacturing centers, handcraft each screen.

Stewart Filmscreen prides itself on out-of-the-box thinking and innovation, setting trends in the A/V marketplace and setting the standard for image fidelity. No project is too custom, too "out there." Stewart screens are designed to meet the most rigorous optical and installation requirements, fulfilling custom designs to match the "unusual" projects with the most technical requirements. They welcome design challenges, and their staff of in-house experts are available to help solve the most complex screen design challenges. Their customers are not restricted or limited to "off-the-shelf" styles or sizes.

In the home theater market, Stewart Filmscreen has developed and introduced gray screen technology, specifically designed for today's digital devices, including FireHawk (which has won more than 15 awards worldwide) and GrayHawk (winner of five industry awards). These screens take image fidelity and dynamic range to a higher level. Stewart has also recently introduced the first curved screen to the home market, the multi-award winning CineCurve model, as well as introducing the largest black screen on the market, the StarGlas 60® rear-projection screen. Stewart Filmscreen has twice been the winner of the Academy Award® for Science and Technological Achievement and the recipient of the Industry Certificate of Excellence for product quality and reliability. In addition, Stewart Filmscreen was the first screen manufacturer to earn the coveted Imaging Science Foundation (ISF) stamp of approval.

Celebrating its 60th anniversary in 2007, Stewart Filmscreen has grown from a small business to an international one, with offices in Denmark and Singapore, in addition to those in the United States. Since its establishment in 1947, Stewart Filmscreen Corporation has continually led the industry in superior craftsmanship, technical excellence, and innovation. More information on Stewart Filmscreen Corporation is available at www.stewartfilmscreen.com or by phoning 800 762 4999.

*StarGlas and CineCurve are patent-pending.

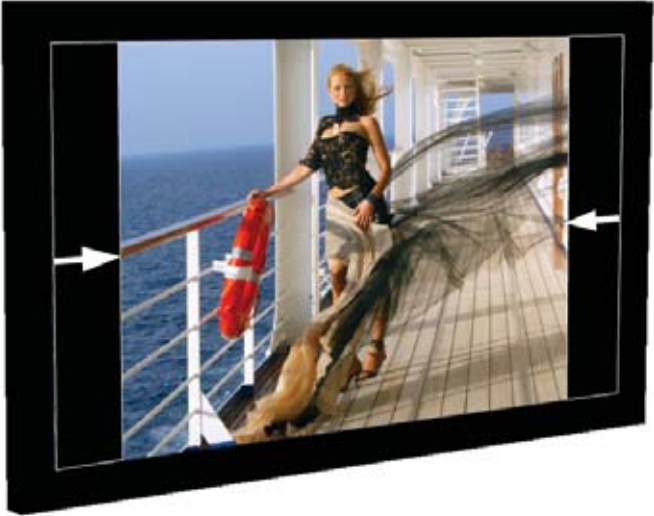


Founded in 1977 and headquartered in Florida, Vutec Corporation designs and manufactures video projection screens, masking systems, and A/V presentation tools, holding patents on its SilverStar™, Retractable-Vu Pro™, and Vu-Flex Pro-Duplex™ screens. Its SilverStar front-projection screen and ArtScreen SoundScape 360 masking system won Product of the Year Awards from Electronic House in 2004 and 2006, respectively. The company's Vision X and Vutec brands and A/V presentation products are designed for home and commercial applications, and are sold through a network of authorized dealers and distributors in 67 countries. For additional information, contact Vutec at 954 545 9000, fax: 954 545 9011, e-mail at info@vutec.com, or visit Vutec online at www.vutec.com.



Screen Research is comprised of scientists and business professionals with years of experience in Audio Visual Design and Technology, with the goal of bringing innovative and solution-oriented products to the video market. Screen Research specializes in acoustically transparent video-projection screens of the highest quality, especially designed to match today's modern fixed-pixel projectors (LCD, DLP, LCoS, etc).

Screen Research screens are expertly designed to eliminate visual distortion, such as moiré and hot spotting, as well as eliminating the need for large-scale high-frequency re-EQing, while preventing deleterious audio comb filtering. With ClearPix2™, you can place the center loudspeaker where it belongs—behind the screen and at the proper height for optimum sound and image coherence. And there is no minimum clearance requirement between the screen and the loudspeakers. With only 1 dB attenuation across the frequency range (and no additional roll-off at high frequencies), you simply set the center loudspeaker level 1 dB higher—no EQ box required. The proprietary and patented ClearPix2 micro-fiber screen formulation has been certified by THX® and ISF and guarantees the highest quality in its class. The optional black backing layer, also certified by THX for its audio efficacy, serves as a complete light kill behind the screen, and yet only adds 1.2 dB of flat attenuation.



The company offers a full range of fixed and motorized screens up to the most sophisticated solutions—fixed and motorized screens with masking systems and the award-winning "Le Wing"—the only retractable screen with an integrated retractable loudspeaker system on the market. Another engineering first is the company's four-way masking screens with TheaterCurve. TheaterCurve models are available in fixed and fixed with two- and four-way masking. 2007 brings new models for the digital commercial theatre market, as well as the solid, non-AT screen market.

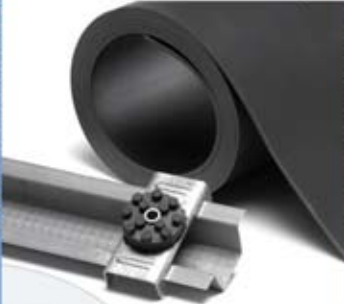
The products have rapidly been recognized and awarded for bringing significant improvements to existing technology. Headquartered in Nantes, France, Screen Research distributes its products worldwide via a privileged network of distributors, dealers, and integrators. St. John Group, Inc. distributes Screen Research in North America and the Caribbean.

For more information, contact the St. John Group by phoning 805 647 3779 or visiting www.screenresearch.com.



- ABSORBERS
- BARRIERS
- DIFFUSERS

AudioSeal Sound Barrier & Isolation Clips



Sound Suede Fabric Wrapped Wall Panels



Sound Diffusers & Bass Traps



Free Catalog & Samples

888.529.9220

www.acousticalsolutions.com