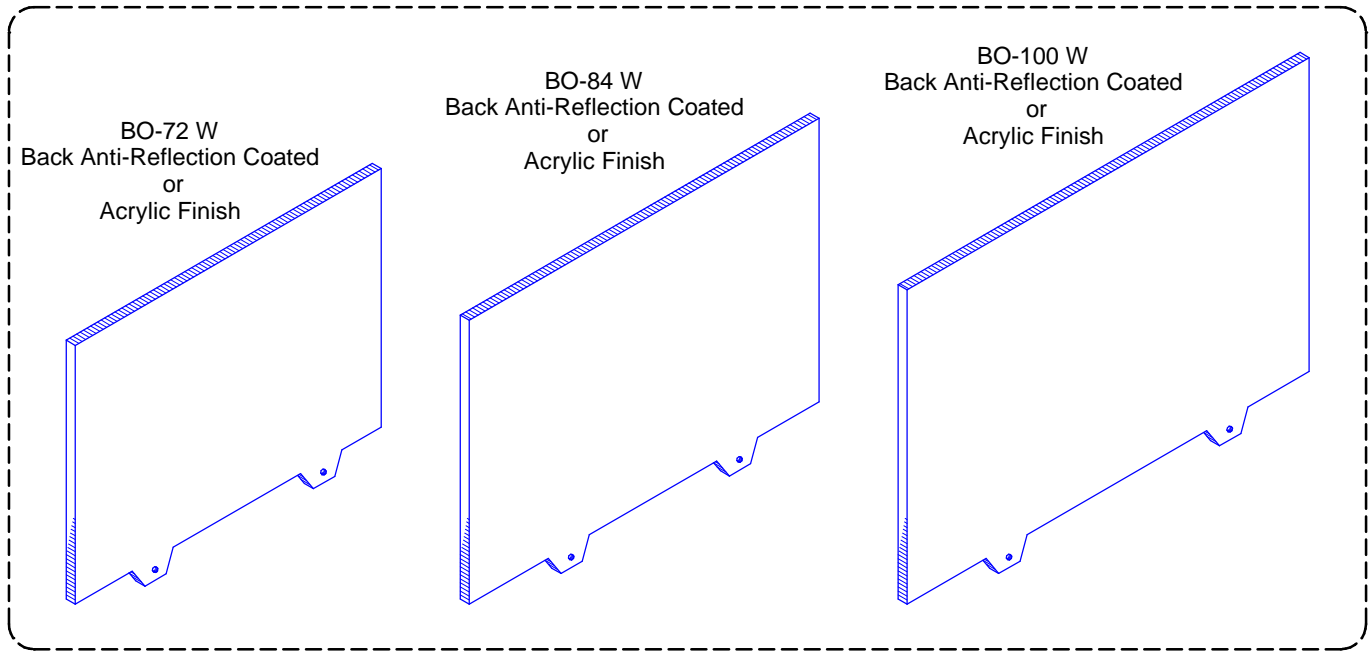


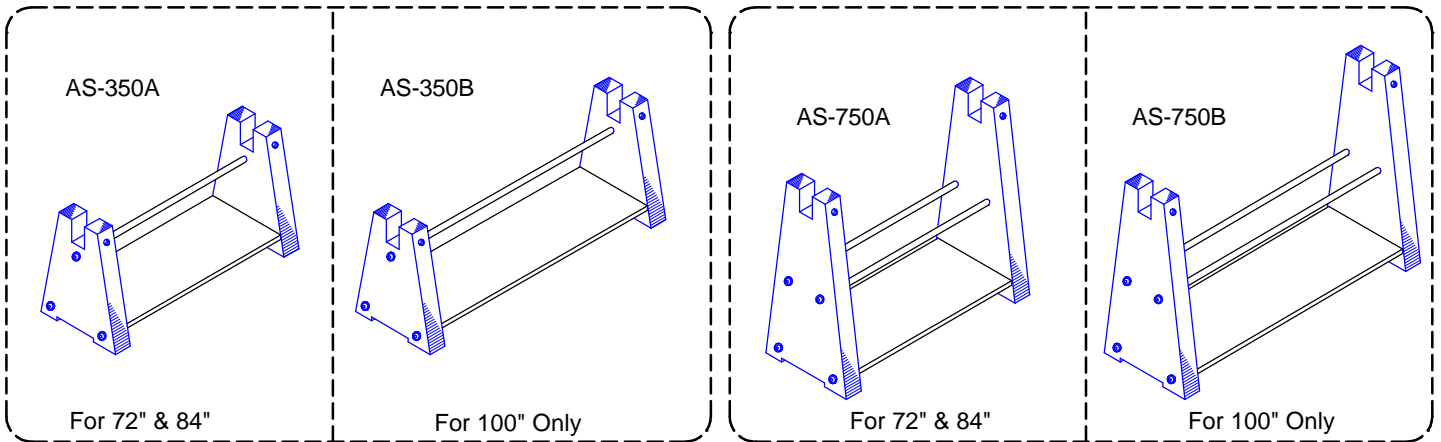
NIPPURA BLUE OCEAN PROJECTION SCREEN 16:9 STOCK PRODUCT LINE

SCREEN MODELS

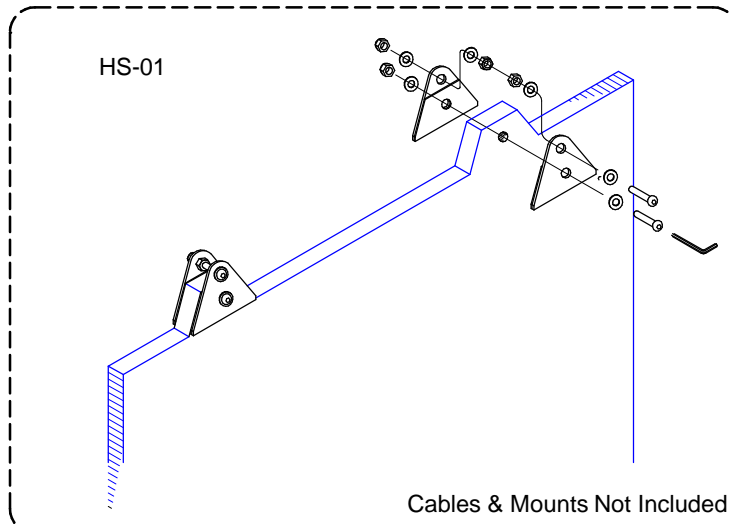


350 Low Acrylic Stand Type

750 High Acrylic Stand Type

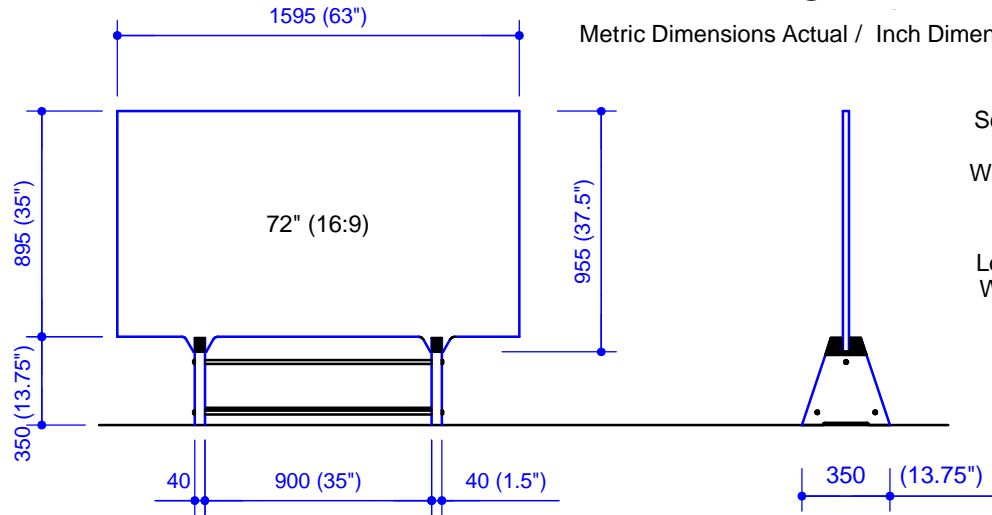


Suspension Bracket Kit: Universal for All Models



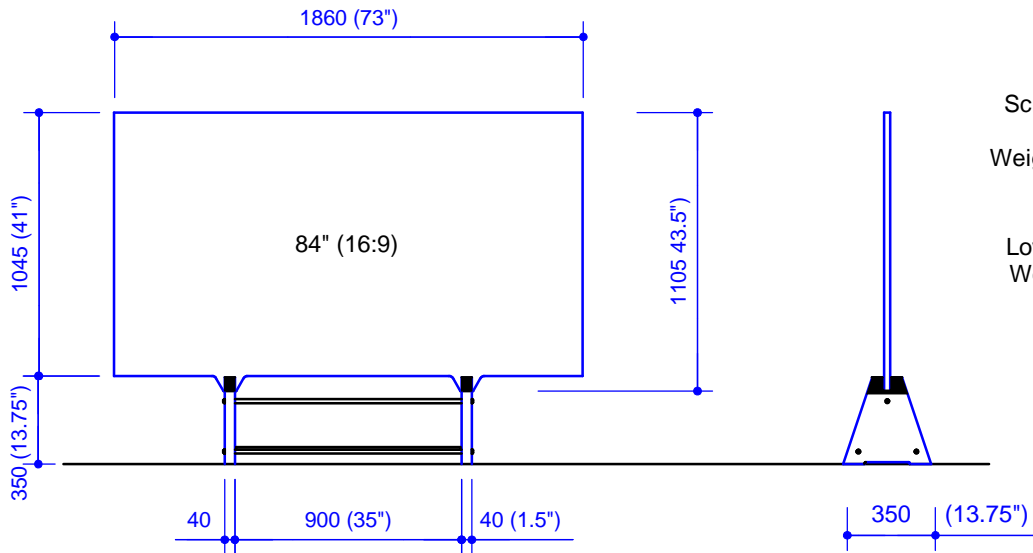
LOW STAND & SCREEN REFERENCE DIMENSIONS

Metric Dimensions Actual / Inch Dimensions Nominal



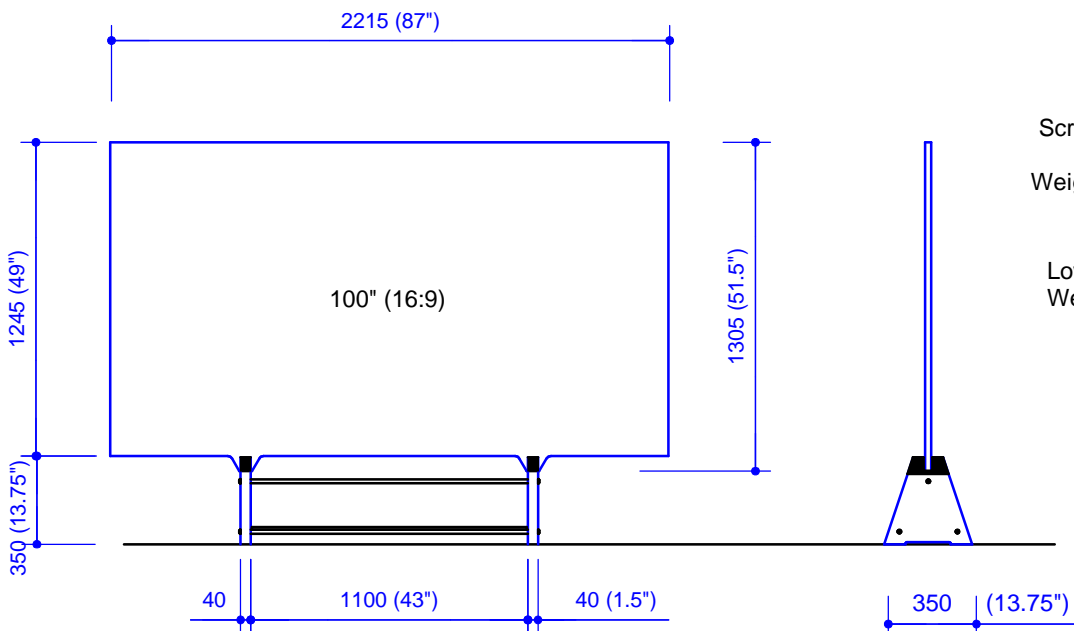
Screen 72" Diagonal
BO-72 W
Weight: 40kg (87lbs)

Low Stand AS-350A
Weight: 8kg (18lbs)



Screen 84" Diagonal
BO-84 W
Weight: 55kg (121 lbs)

Low Stand AS-350A
Weight: 8kg (18lbs)

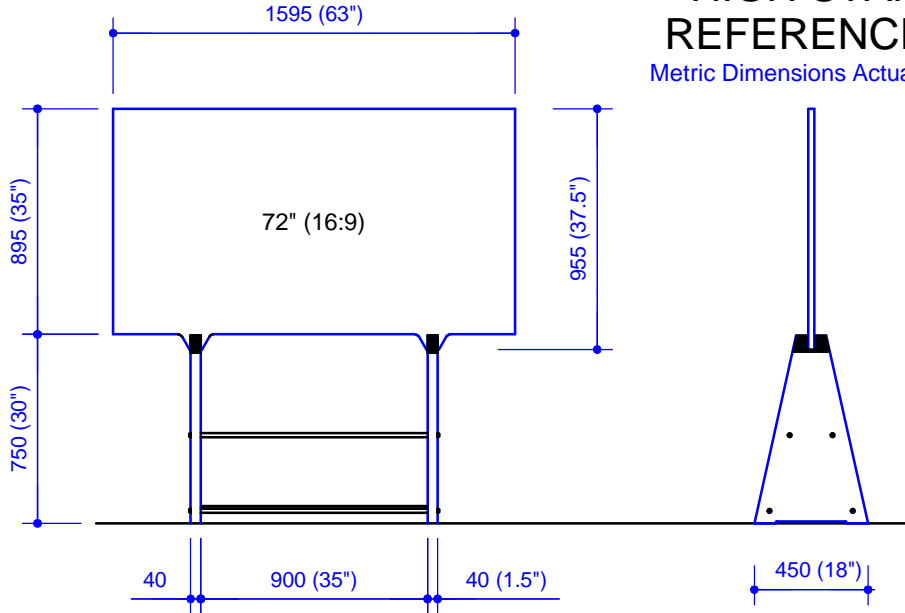


Screen 100" Diagonal
BO-100 W
Weight: 77kg (170 lbs)

Low Stand AS-350B
Weight: 9kg (20 lbs)

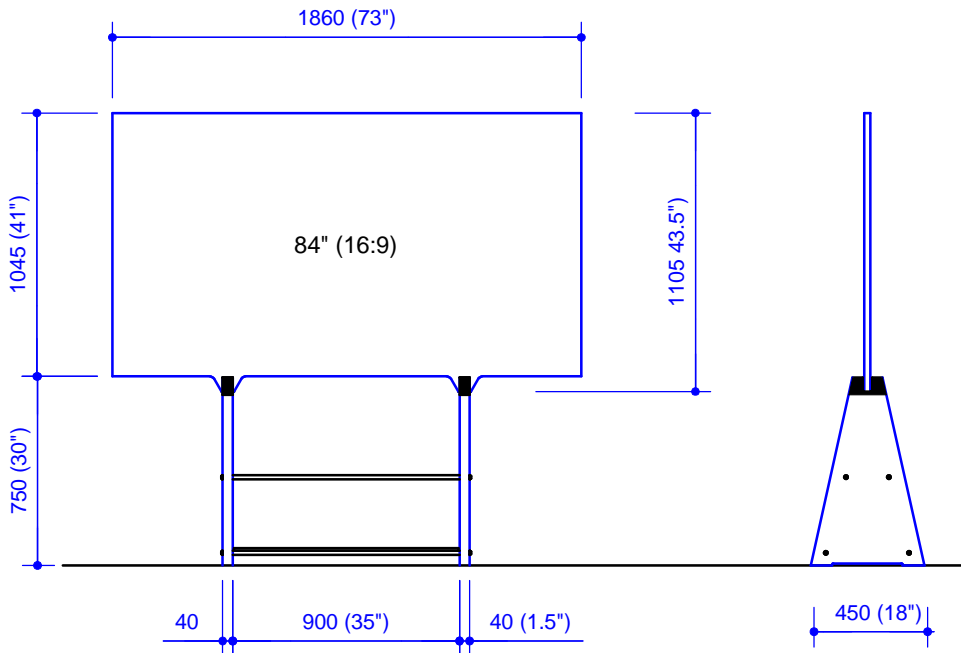
HIGH STAND & SCREEN REFERENCE DIMENSIONS

Metric Dimensions Actual / Inch Dimensions Nominal



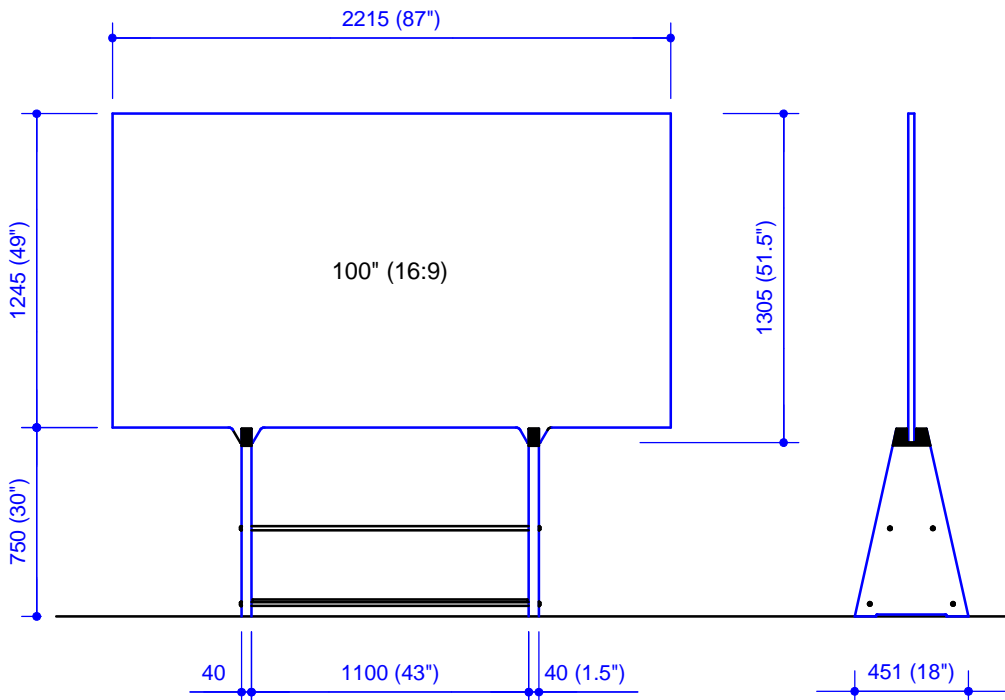
Screen 72" Diagonal
BO-72 W
Weight: 40kg (87lbs)

High Stand AS-750A
Weight: 20kg (44 lbs)



Screen 84" Diagonal
BO-84 W
Weight: 55kg (121 lbs)

High Stand AS-750A
Weight: 20kg (44 lbs)



Screen 100" Diagonal
BO-100 W
Weight: 77kg (170 lbs)

High Stand AS-750B
Weight: 21kg (46 lbs)

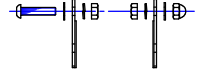
HS-01 PARTS LIST

#1 Brackets	4 pcs	#4 Normal Nuts	4 Pcs	#7 Wrench	1 pc
#2 Button Bolts	4 Pcs	#5 Normal Washers	8 Pcs	#8 Spanner	1 Pc
#3 Cap Nuts	4 Pcs	#6 Lock Washers	4 Pcs		

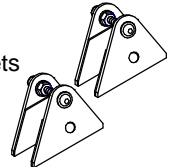
ASSEMBLY INSTRUCTION FOR PROFESSIONAL INSTALLATION ONLY (NOT RECOMMENDED FOR CONSUMER TO INSTALL)

1 Caution: Use only professional technicians for conducting this Installation. Use only included parts and tools!

2 Peel back the protective covering around the area of the screen flanges on both sides.



3 Away from the Screen loosely assemble ONLY the top button bolts, washers, and nuts thereby creating two loosely bolted sets of brackets. DO NOT Tighten Yet.



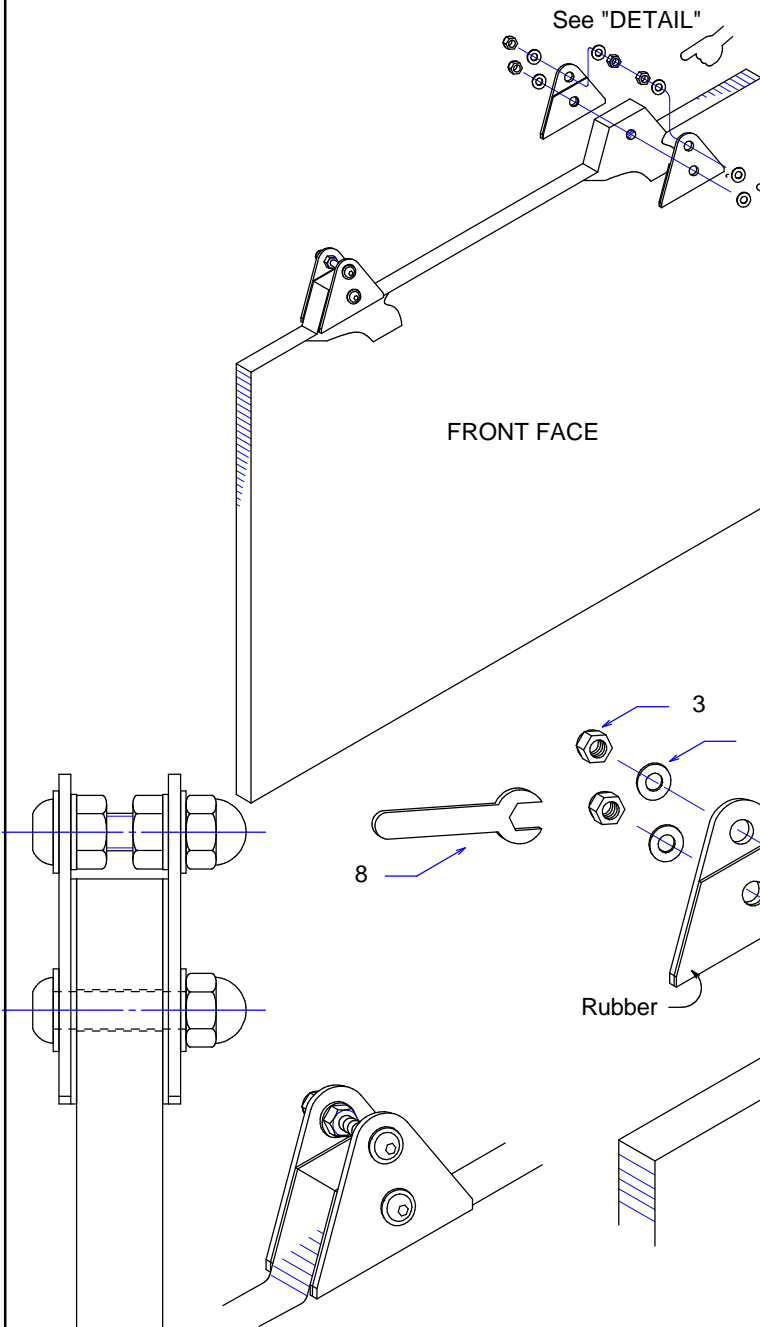
4 Place a partially assembled bracket over the screen flange, centering the bottom hole with hole in the screen flange. Then attach washers, button bolt and nut in bottom hole and firmly tighten until the inner neoprene pads are firmly compressed. Do not tighten top bolts yet. Use only the tools included for tightening. Now repeat the same for the next bracket. Be sure the faces of brackets are centered and aligned on the flange.

5 Tighten the inner nut of the top button bolt (closest to bolt head) so that lockwasher is completely compressed. Next, gently and slowly tighten the outer cap nut so that the gap of the bracket is the same as the thickness of the Screen. Finally, firmly tighten the remaining inner nut outward toward the cap nut fully compressing the lock washer. Caution: Be sure to follow the above order to avoid bending brackets.

Once again, check to make sure that all washers are in place as shown and that all nuts are securely tightened.



Caution excessive over tightening can crack Screen use only the tools provided.



6 Attach suspension cable system following safety and engineering criteria of applicable Local Codes threading connectors/cables (not provided by manufacturer) between screen flange and top button bolt. Suspend with cables straight up and down ONLY. Do not attempt to suspend Screen at forced angles. Periodically check to make sure all components of assembly are tight. Remove remaining clear protective film and store for future use and repacking.

BLUE OCEAN SUSPENSION BRACKET INSTALLATION PICTORIAL

1

Use only in conjunction with Written Instructions and as a Supplement.

Step 1: Away from the screen, first assemble two sets of brackets loosely with top bolt. Take care to place nuts and washers in proper order. Rubber pads should face inward. Then gently place over screen flange.



Step 2: Gently insert bottom bolt & washer set and center bracket on screen flange.



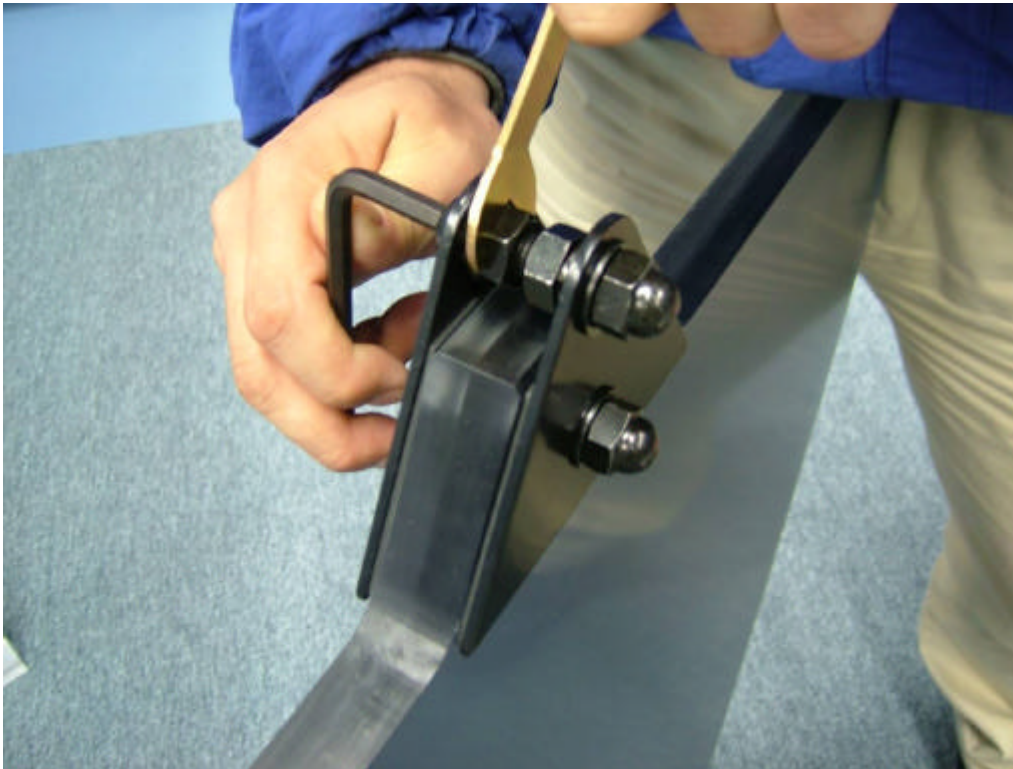
BLUE OCEAN SUSPENSION BRACKET INSTALLATION PICTORIAL

2

Step 3: Place on washer & firmly tighten nut, completely compressing rubber pads.



Step 4: Firmly tighten top inner nut nearest bolt head, completely compressing lock washer.



BLUE OCEAN SUSPENSION BRACKET INSTALLATION PICTORIAL

3

Step 5: Note inner lock washer totally compressed & adjacent nut loose with play.



Step 6: Gently tighten cap nut to set bracket the same width as bottom bolt, loosen adjacent inner nut as necessary to make gap exactly the same.



BLUE OCEAN SUSPENSION BRACKET INSTALLATION PICTORIAL

4

Step 7: Now firmly tighten final inner nut outward, completely compressing lock washer.



Step 8: Recheck now that all nuts are firmly tightened, be sure to use only the tools provided to ensure no over torque or damage. Be sure that all rubber pads and lock washers are completely compressed.



AS-750A/B PARTS

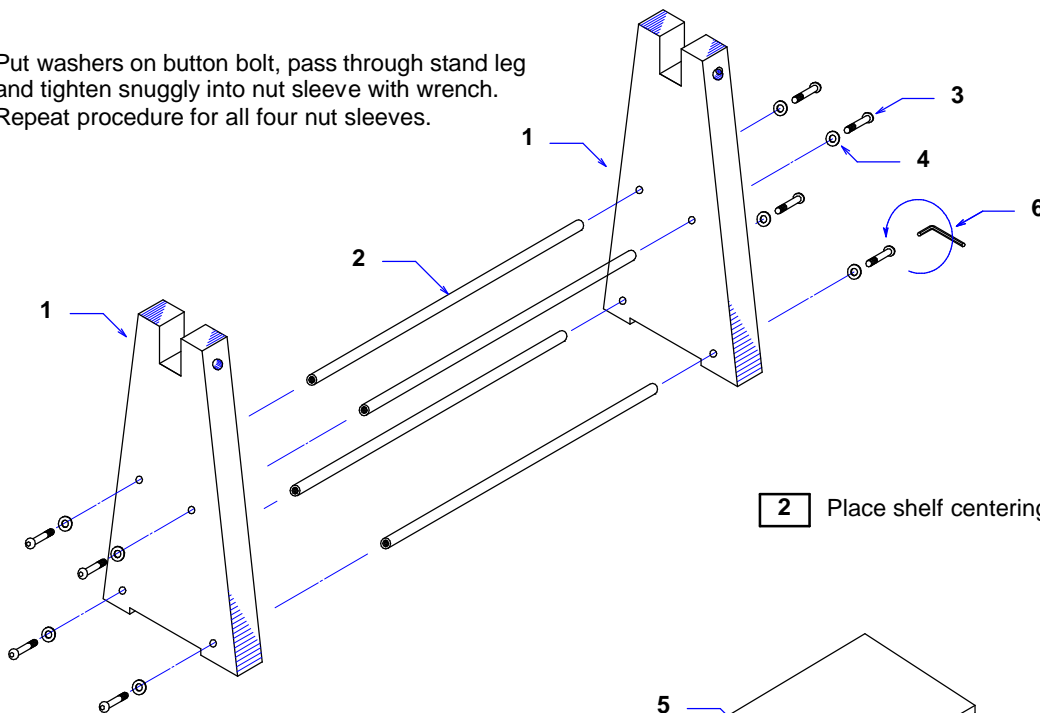
Set Parts List

#1 Stand Leg	2 pcs	#7 Hole Plate	2 pcs
#2 Nut Sleeve	4 Pcs	#8 Nut Plate	2 Pcs
#3 Button Bolt	8 Pcs	#9 Push Bolt	2 Pcs
#4 Washer	8 Pcs		
#5 Shelf	1 Pc		
#6 Wrench	1 Pc		

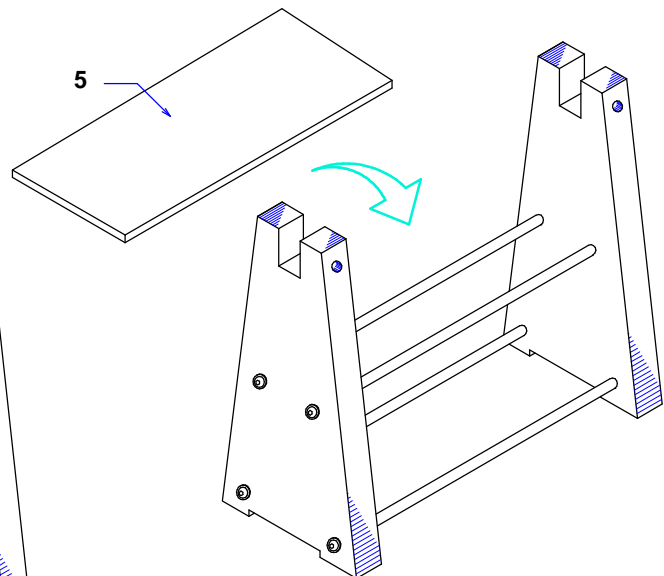
ASSEMBLY INSTRUCTION

CAUTION: ONLY SET UP THE STAND LEGS ON FLAT, LEVEL, STABLE, HARD SURFACE MOUNT OR FLOOR. SCREENS & STANDS ARE HEAVY, DO NOT USE IN PLACES WHERE PHYSICAL COLLISION OR FORCIBLE TIPPING MAY OCCUR. IF THERE IS THE POTENTIAL OF FORCED TIPPING OR COLLISION OR HIGH WIND, FIX STAND LEGS TO MOUNTING SURFACE BY MECHANICAL MEANS SUCH AS BRACKETS OR INSERTION CHANNEL. USE PROPER CARE AND CONSIDERATION BEFORE SETTING UP.

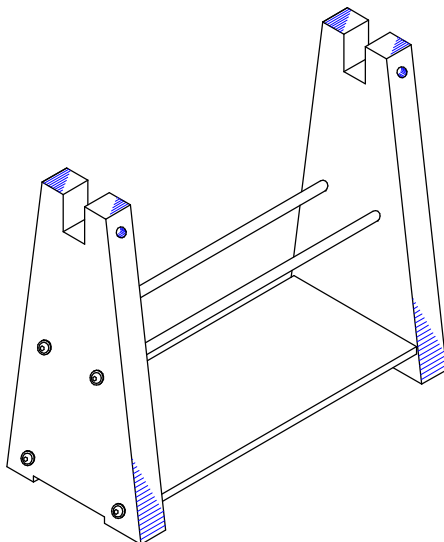
- 1** Put washers on button bolt, pass through stand leg and tighten snugly into nut sleeve with wrench. Repeat procedure for all four nut sleeves.



- 2** Place shelf centering on bottom two nut sleeves.



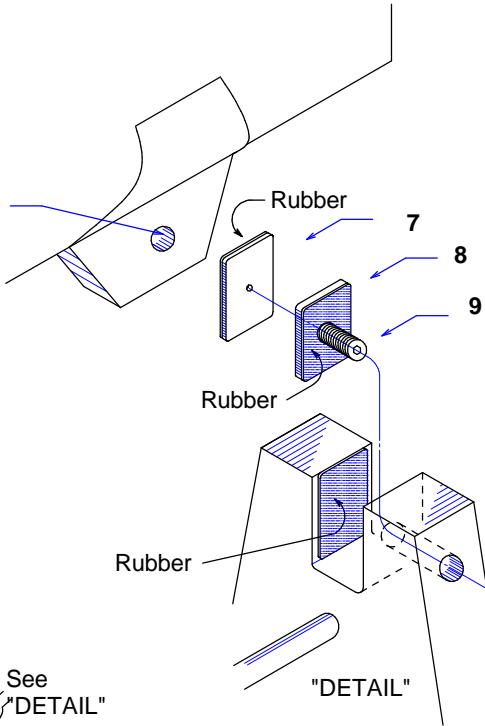
- 3** Place on flat, hard level surface where there is no danger of shifting, collision or tipping over. CAUTION: Screens & Stands are Heavy.



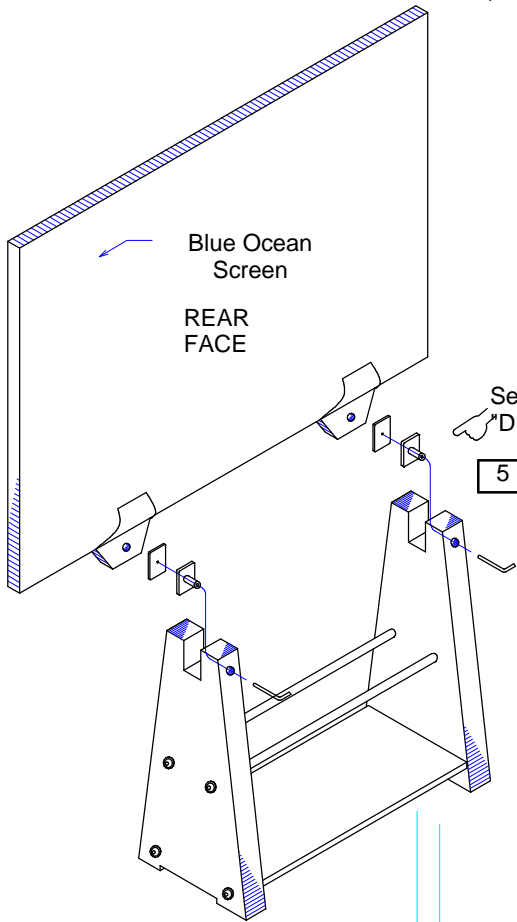
4 Carefully peel back about 4 inches of the protect film from the screen flanges before setting the Screen into the stand channel. Then using proper amount of persons (no less than 2) carefully set and center the Screen into the top stand channels. Have one person hold Screen in place firmly against the front rubber while the other prepares to install the fixing hardware. Be careful not to get fingers jammed between Screen and Stand.

CAUTION: Holes located in the flanges of the Screen are for use with separate Suspension Kit assembly. These holes are not used for this STAND KIT. Do NOT try to thread button bolts or push bolt into holes, doing so will cause damage.

CAUTION: These Holes are NOT for use with Stand. DO NOT insert/thread the push bolts into this holes!



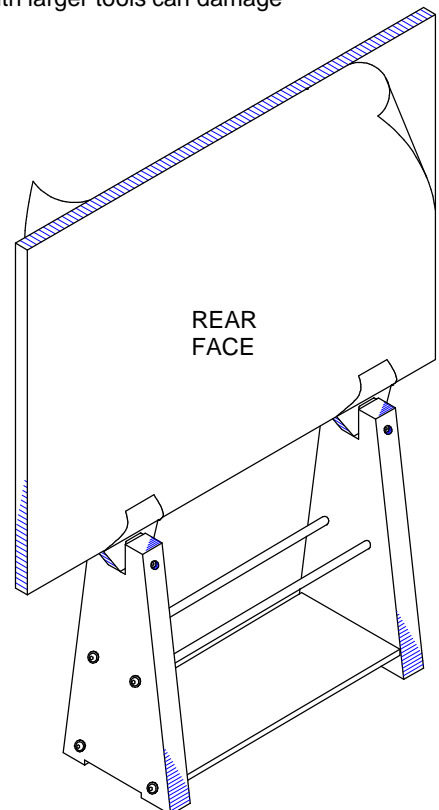
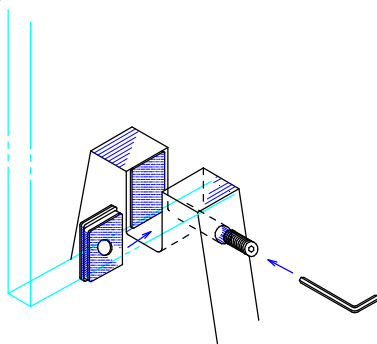
! Use only wrench included and your strongest hand power! OVER TIGHTENING with other tools or leverage may DAMAGE Stand or Screen.



5 From the side of the Stand and NOT the top, insert the nut plate and hole plate between the Screen and Stand. This will help prevent scratching of Screen. Now align the hole of the Stand and nut plate. Insert the push bolt and screw into the nut plate. Tighten until the Screen is firmly compressing the front rubber pad. Tighten firmly so that the Screen is secure.

Warning: do not use other tools, use only the tools included. Over torquing with larger tools can damage Screen & hardware.

! Insert Plates from Side and not Top, to prevent accidental scratching of Screen. Be careful not to get fingers pinched!



6 Carefully remove the remaining protection film. Remember to store for future packing or shipping. Do not dispose of!

7 Periodically check and tighten push bolt for Safety and make sure assembly is tight and secure.

AS-350A/B PARTS

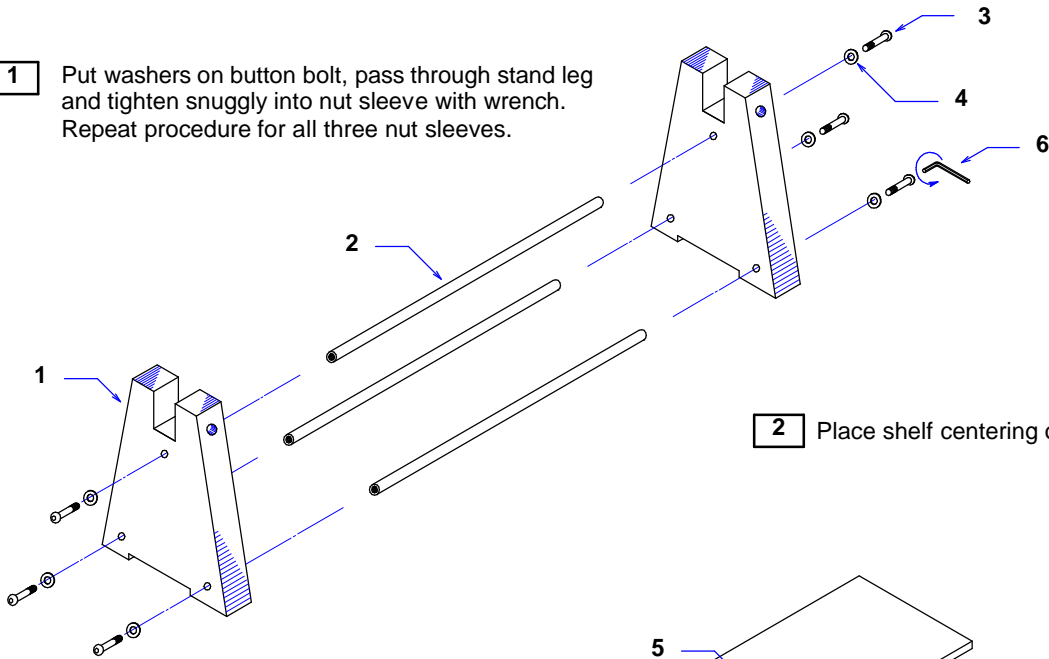
Set Parts List

#1 Stand Leg	2 pcs	#7 Hole Plate	2 pcs
#2 Nut Sleeve	3 Pcs	#8 Nut Plate	2 Pcs
#3 Button Bolt	6 Pcs	#9 Push Bolt	2 Pcs
#4 Washer	6 Pcs		
#5 Shelf	1 Pc		
#6 Wrench	1 Pc		

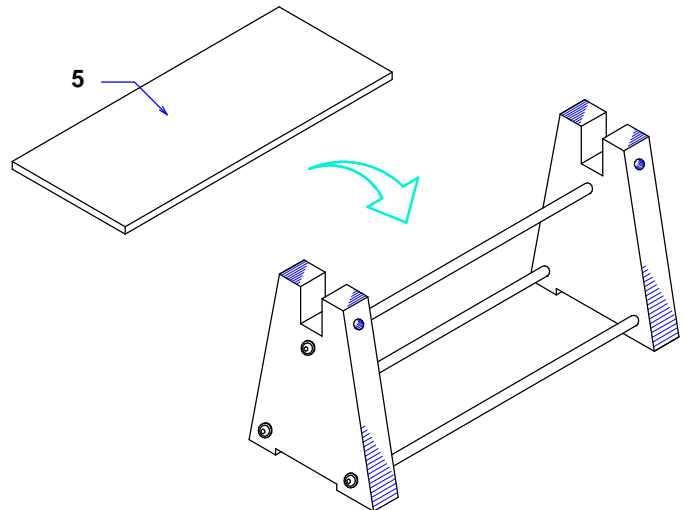
ASSEMBLY INSTRUCTION

CAUTION: ONLY SET UP THE STAND LEGS ON FLAT, LEVEL, STABLE, HARD SURFACE MOUNT OR FLOOR. SCREENS & STANDS ARE HEAVY, DO NOT USE IN PLACES WHERE PHYSICAL COLLISION OR FORCIBLE TIPPING MAY OCCUR. IF THERE IS THE POTENTIAL OF FORCED TIPPING OR COLLISION OR HIGH WIND, FIX STAND LEGS TO MOUNTING SURFACE BY MECHANICAL MEANS SUCH AS BRACKETS OR INSERTION CHANNEL. USE PROPER CARE AND CONSIDERATION BEFORE SETTING UP.

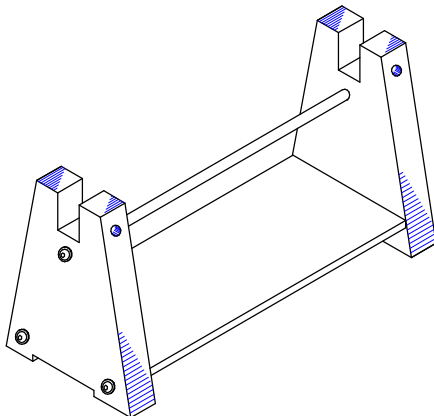
- 1** Put washers on button bolt, pass through stand leg and tighten snugly into nut sleeve with wrench. Repeat procedure for all three nut sleeves.



- 2** Place shelf centering on bottom two nut sleeves.



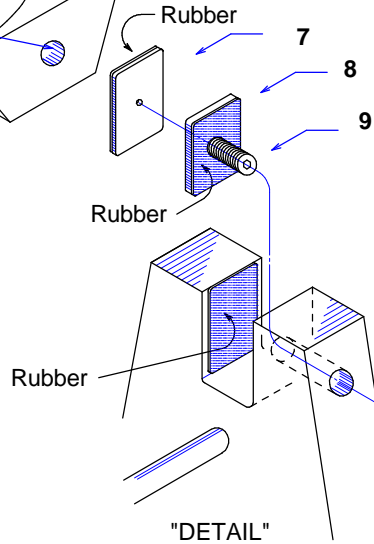
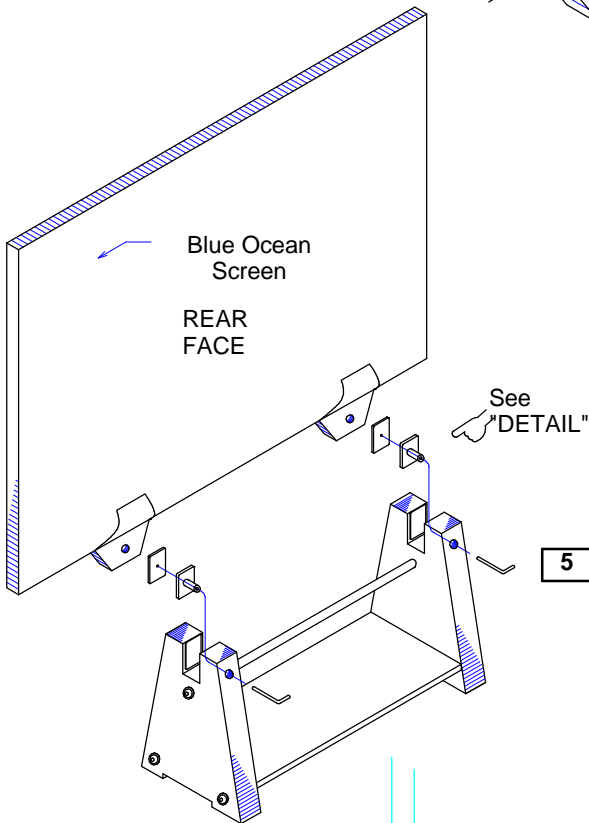
- 3** Place on flat, hard level surface where there is no danger of shifting, collision or tipping over. CAUTION: Screens & Stands are Heavy.



4 Carefully peel back about 4 inches of the protect film from the screen flanges before setting the Screen into the stand channel. Then using proper amount of persons (no less than 2) carefully set and center the Screen into the top stand channels. Have one person hold Screen in place firmly against the front rubber while the other prepares to install the fixing hardware. Be careful not to get fingers jammed between Screen and Stand.

CAUTION: Holes located in the flanges of the Screen are for use with separate Suspension Kit assembly. These holes are not used for this STAND KIT. Do NOT try to thread button bolts or push bolt into holes, doing so will cause damage.

CAUTION: These Holes are NOT for use with Stand. DO NOT insert/thread the push bolts into this holes!

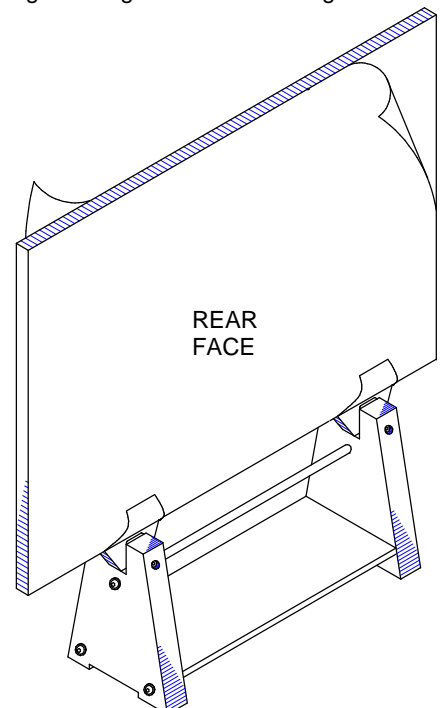
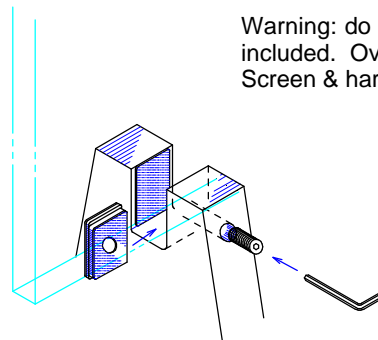


! Use only wrench included and your strongest hand power! OVER TIGHTENING with other tools or leverage may DAMAGE Stand or Screen.

5 From the side of the Stand and NOT the top, insert the nut plate and hole plate between the Screen and Stand. This will help prevent scratching of Screen. Now align the hole of the Stand and nut plate. Insert the push bolt and screw into the nut plate. Tighten until the Screen is firmly compressing the front rubber pad. Tighten firmly so that the Screen is secure.

Warning: do not use other tools, use only the tools included. Over torquing with larger tools can damage Screen & hardware.

! Insert Plates from Side and not Top, to prevent accidental scratching of Screen. Be careful not to get fingers pinched!



6 Carefully remove the remaining protection film. Remember to store for future packing or shipping. Do not dispose of!

7 Periodically check and tighten push bolt for Safety and make sure assembly is tight and secure.

BLUE OCEAN STAND PUSH PLATE INSTALLATION PICTORIAL

1

Use only in conjunction with Written Instructions and as a Supplement.
Holes in screen flange are not used, do not try to insert push bolt into screen flange holes.
Use two persons one to hold screen, one to assemble push plate.

Step 1: Hold nut plate and push plate back to back with rubber pads facing outward and thread hole and indent centered.



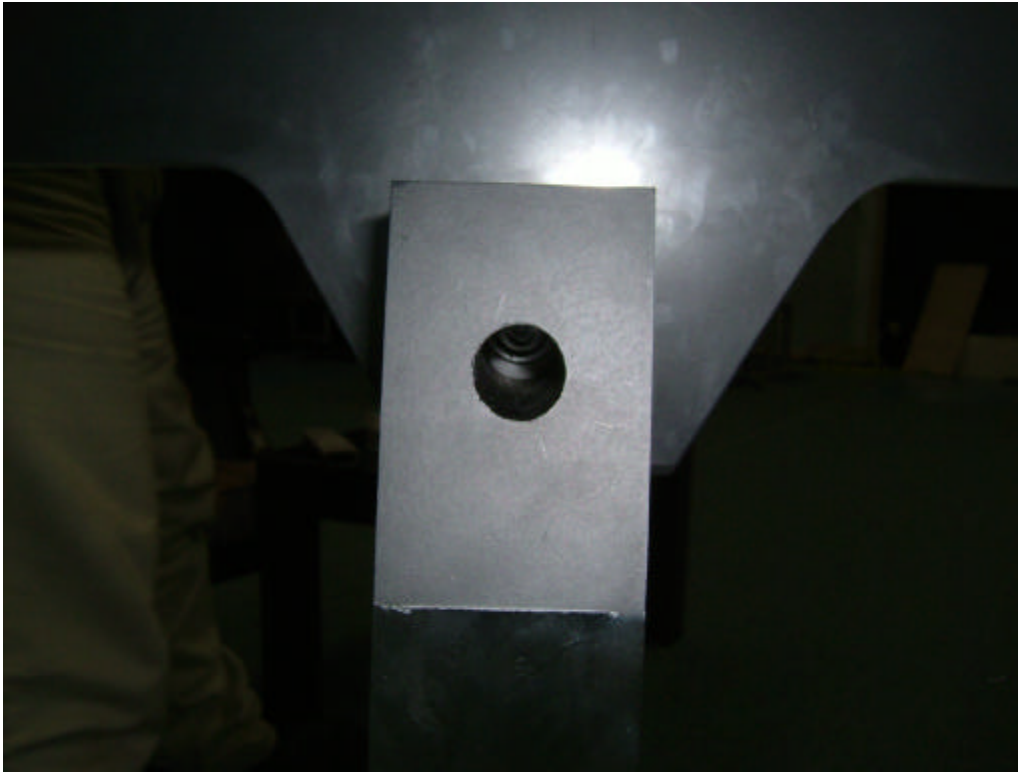
Step 2: Holding sandwiched with forefinger and thumb, slide in from the side between flange and stand, do not try to slide in from the top as you may scratch the screen surface/coating.



BLUE OCEAN STAND PUSH PLATE INSTALLATION PICTORIAL

2

Step 3: Align the nut plate hole center with the stand hole. Be sure that flange is also centered on stand.



Step 4: Slowly thread the push bolt into nut plate through the hole in the stand, be careful not to cross thread.



BLUE OCEAN STAND PUSH PLATE INSTALLATION PICTORIAL

3

Step 5: Tighten only with the wrench included, firmly compressing the rubber pads.



Step 6: Confirm alignment and then retighten each side once more.

