

BLUE OCEAN STAND PUSH PLATE INSTALLATION PICTORIAL

1

Use only in conjunction with Written Instructions and as a Supplement.
Holes in screen flange are not used, do not try to insert push bolt into screen flange holes.
Use two persons one to hold screen, one to assemble push plate.

Step 1: Hold nut plate and push plate back to back with rubber pads facing outward and thread hole and indent centered.



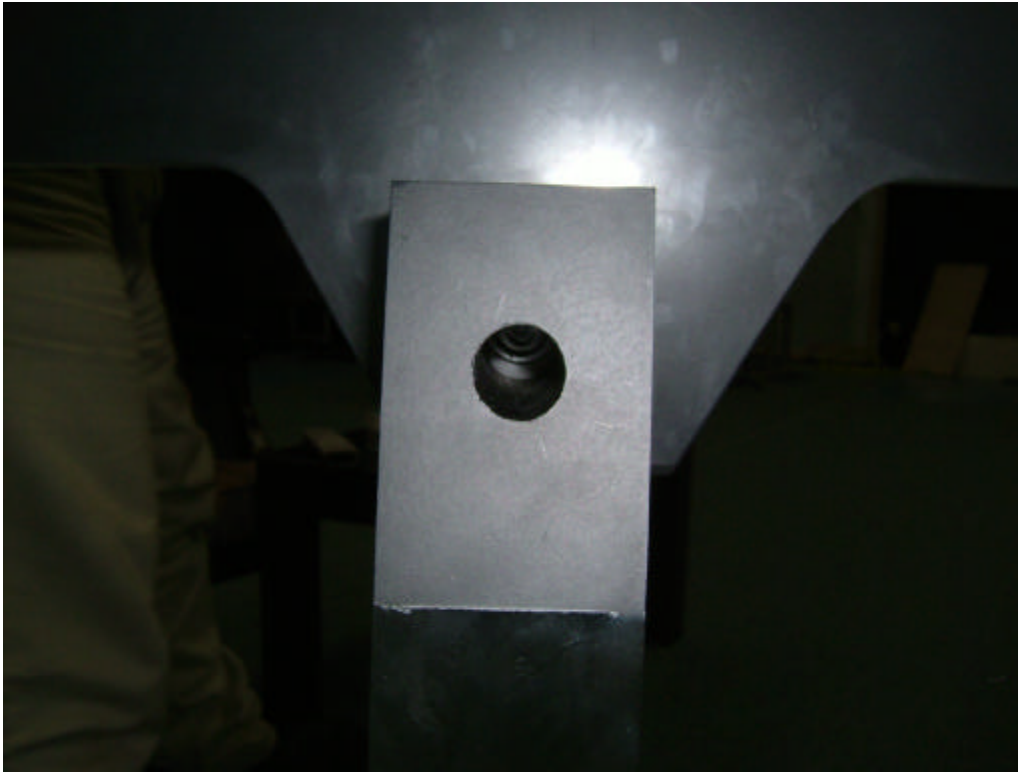
Step 1: Holding sandwiched with forefinger and thumb, slide in from the side between flange and stand, do **not** try to slide in from the top as you may scratch the screen surface/coating.



BLUE OCEAN STAND PUSH PLATE INSTALLATION PICTORIAL

2

Step 3: Align the nut plate hole center with the stand hole. Be sure that flange is also centered on stand.



Step 4: Slowly thread the push bolt into nut plate through the hole in the stand, be careful not to cross thread.



BLUE OCEAN STAND PUSH PLATE INSTALLATION PICTORIAL

Step 5: Tighten only with the wrench included, firmly compressing the rubber pads.



Step 2: Confirm alignment and then retighten each side once more.

